

PRO JE CTS



NAYADA / PROJECTS

2 | COMPANY

Projects

6 | COMMUNICATIONS / TELECOM / IT

46 | SPORTS, PUBLIC AND STATE INSTITUTIONS

84 | AUTOMOBILE DEALERSHIPS

92 | BANKS

112 | SPLENDID OFFICES OF OTHER SPLENDID COMPANIES

Catalog

170 | PRODUCTS



OUR MISSION IS «TO CREATE!»
 TO CREATE BEAUTIFUL AND USEFUL PRODUCTS FOR ARRANGEMENT OF WORKING AREAS.
 TO CREATE AREAS FOR THE DEVELOPMENT OF PEOPLE AND COMPANIES.

20 REPRESENTATIVE OFFICES

1000 EMPLOYEES

4000 PROJECTS PER YEAR

20000m² AREA OF PRODUCTION FACILITIES



1995
 In the beginning was the Word, and the Word was «To Create». Then there was the Activity, and the Activity was «To create space»!

1997
 NAYADA-Standart office partition is innovatively created, making an outstanding benchmark in the Russian industry. The efficiency of unique technological solutions for partition systems is proved by numerous patents.

1998
 Production of mobile partitions is started, introducing the first Russian product that has gradually turned open spaces into a widespread solution for office space arrangements in Russia.

2001
 The Company's first regional branch office is opened in Kazan.

2004
 NAYADA becomes the first Russian company to carry out tests of NAYADA-Fireproof fire resistant systems and receives the EI-90 certificate (108 minutes fire resistance).

2005
 Production facility for unique NAYADA-Hufcor sliding partitions is launched for the first time in Russia in cooperation with Hufcor Inc., USA. First International Architectural Contest «NAYADA ArchChallenge» is held.

2007
 NAYADA opens an office in Italy (Verona).

2011
 The Company starts investing into building modern high-tech production facilities. Production of original furniture under the LEPOTA brand is launched. NAYADA Glass Technology, the production complex for glass processing is initiated. Company is certified by ISO 9001:2008.

2012
 NAYADA wins recognition with the «Supplier of the Year» Award at the Best Office Awards. NAYADA presents a new project – the «12 Architects Create Furniture». Production pieces of furniture were showcased in Russia at the Arch Moscow Exhibition and in Germany at the ORGATEC Exhibition.

2014
 «12 Architects Create Furniture» project is joined by two more architects: Luca Scacchetti and Marco Piva. Baring Vostok Capital Partners project, in which NAYADA participated, receives the Grand Prix in the Best Office Awards 2014. NAYADA opens its 20th branch office in Surgut.

NAYADA GROUP

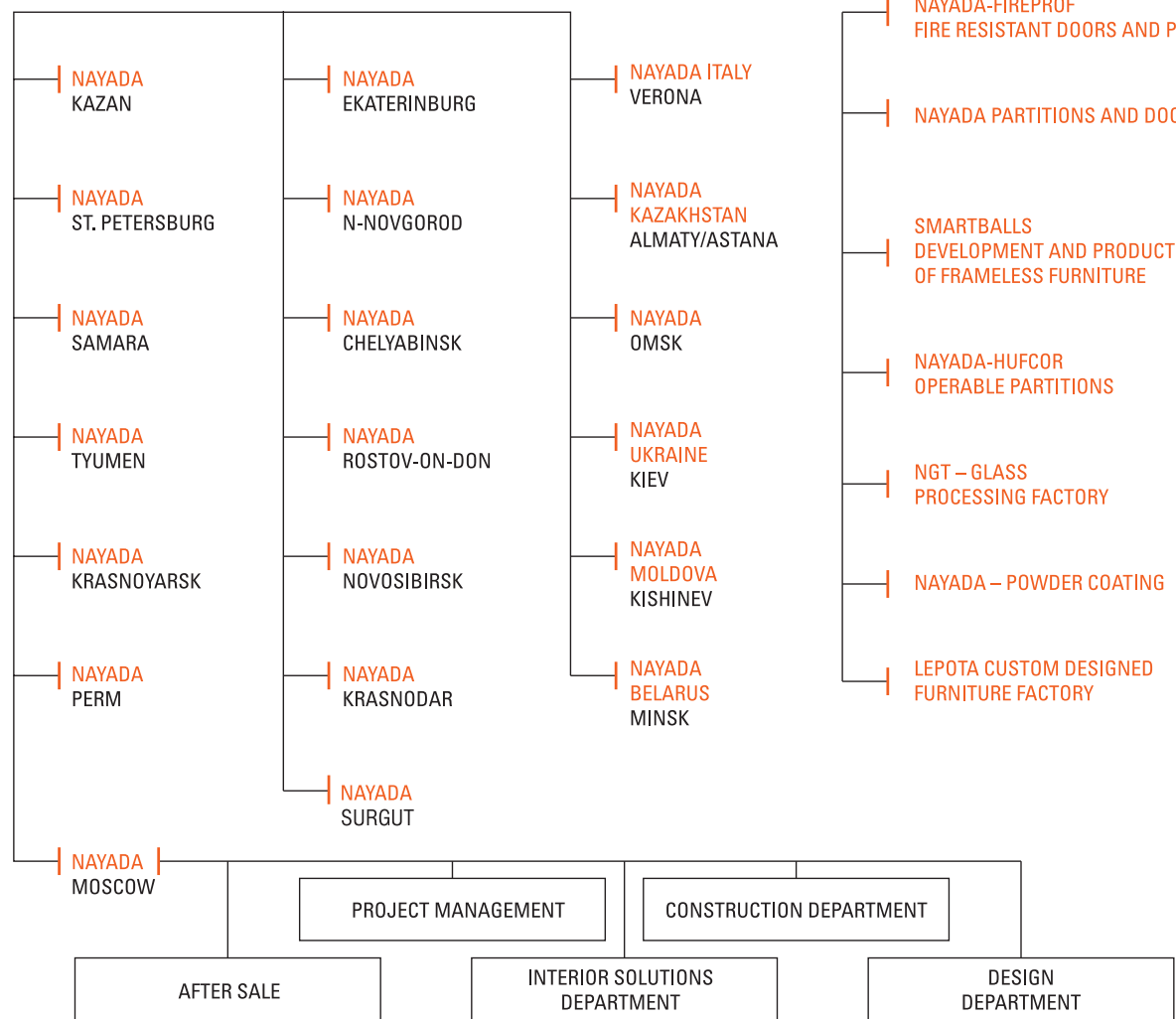


QUALITY MANAGEMENT SYSTEM

INNOVATIONS

TRAINING PROGRAMS — ARCHICHALLENGE

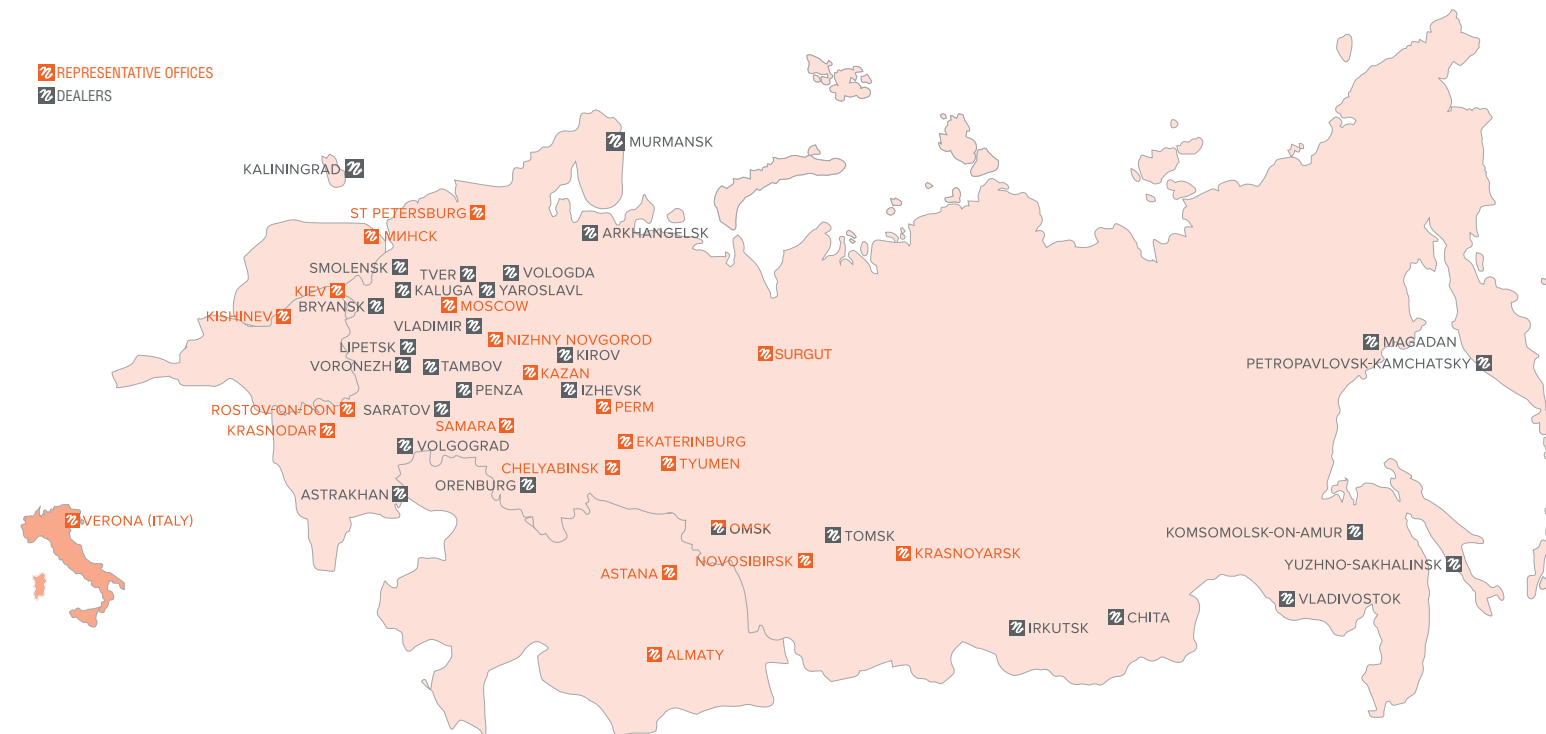
NAYADA OFFICES

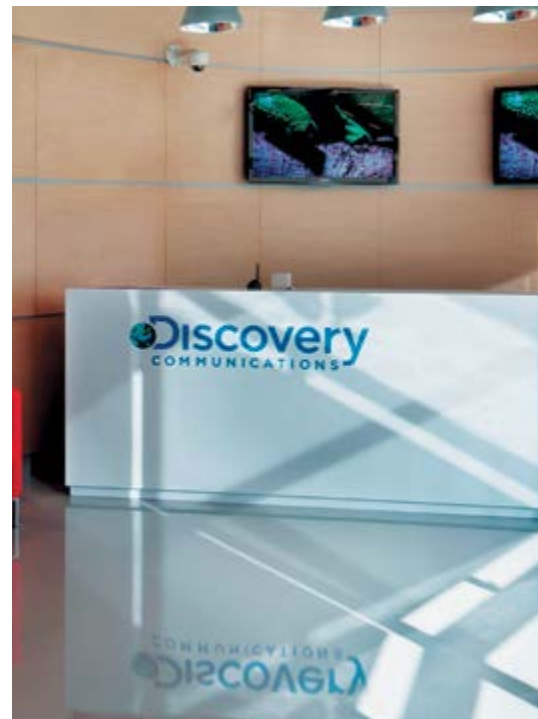


GEOGRAPHY

REPRESENTATION

DEALERS





ALCATEL LUCENT	42
Moscow	
HEWLETT PACKARD	
Moscow	
INTEL	
Moscow	
BCC COMPANY	
Moscow	
CISCO SYSTEMS	
Moscow	
DREAMCRAFT	
Moscow	
DISCOVERY	36
Moscow	
ENDAVA	
Kishinev	
EPAM	
Minsk	
GOOGLE	18
Moscow	
MAIL.RU GROUP	22
St. Petersburg	
IBS	
Moscow	
MAX-HOUSE	
Kishinev	
MICROSOFT TECHNOLOGY CENTER	30
Almaty	
Rostov	
Tyumen	
Moscow	
Ekaterinburg	
Irkutsk	
NEXX DIGITAL	
Moscow	
NOKIA	40
Moscow	
OLYMPUS	
Moscow	
ORACLE	
Almaty	
PEDERSEN & PARTNERS	
Kishinev	
PIONEER	
Moscow	
S&T INTERNATIONAL	
Moscow	
SAMRES	
Kishinev	
SAMSOLUTIONS	
Minsk	
SAMSUNG	
Moscow	
TELECA	
N-Novgorod	
AI-SYSTEMS	
Moscow	
IT-ES	
Moscow	
ACTIVE TELECOM	
Kiev	

AMD	
Moscow	
ASHMANOV AND PARTNERS	
Moscow	
BEELINE	
Moscow	
Krasnodar	
Krasnoyarsk	
Kiev	
Petrozavodsk	
Vladivostok	
Bryansk	
Tver	
Stavropol	
Khabarovsk	
VKONTAKTE	26
St. Petersburg	
VISOR	
Moscow	
VIMPELCOM	
Moscow	
N-Novgorod	
Petrozavodsk	
St. Petersburg	
GERKON	
Moscow	
GIGA-BYTE	
Bryansk	
GLONASS	
Moscow	
Kazan	
GULF STREAM	
N-Novgorod	
DIASOFT TECHNOPARK	
Moscow	
EUROSET	
Moscow	
ETK	
Krasnoyarsk	
IMIDZH.RU	
Moscow	
INSOTEL	
Moscow	
INFOVOTCH	
Moscow	
JET INFOSYSTEMS	
Moscow	
INFOTECs	
Moscow	
KYIVSTAR	
Kiev	
KASPERSKY LAB	
Moscow	
Kiev	
LUXOFT	
Moscow	
MEGAPHONE	
Moscow	
Kazan	
Penza	
Tver	
Chita	
Kirov	

Vladivostok	
MEDIA-NEXT	
Moscow	
MOSCOW CELLULAR	
Moscow	
MOSTELECOM	
Moscow	
MTS	
Moscow	
Minsk	
Krasnodar	
N-Novgorod	
Vladivostok	
Tver	
Chita	
Kirov	
NOVOTEK	
Moscow	
RADIO «RETRO FM»	
Volgograd	
RADIO STATION «EUROPE PLUS»	
Chita	
Rambler	
Moscow	
ROSTELECOM	
Bryansk	
Chelyabinsk	
Vladivostok	
RANDY	
Moscow	
SAMSUNG ELECTRONICS	44
Moscow	
SVYAZNOY	
Gatchina	
COMMUNICATION INTECH	
Moscow	
SVYAZINVEST	
Moscow	
NORTH-WEST TELECOM	
Vologda	
Arkhangelsk	
SISTEMA TELECOM	
Moscow	
SKY LINK	
Kirov	
CONTUR	
Ekaterinburg	
SOLVO LOGISTIC	
St. Petersburg	
TATSOFT	
Kazan	
TV CHANNEL «TELE 2»	
Vologda	
TV CHANNEL «STS-CHITA»	
Chita	
TV CHANNEL «TNT CHITA»	
Chita	
TELECOM SERVICE	
Moscow	
TELEKOMFORT	
Moscow	

TELESYSTEMS OF UKRAINE	
Kiev	
TECHNOSOFT	
Krasnoyarsk	
TIAYTI GROUP	
Kazan	
TNT TELEVISION NETWORK	
Moscow	
TRANSTELECOM	
Chita	
TRIGOR	
Moscow	
CENTRE OF INFORMATION TECHNOLOGIES	
Kazan	
EQUANT	
Moscow	
EXPERT SOLUTIONS	
Moscow	
YANDEX	8
Moscow	
Kazan	
Kiev	
Ekaterinburg	
.....	14
URALSVYAZINFORM	
Chelyabinsk	
EMC2	
Moscow	
ELDORADO	
Moscow	
SAP	
Moscow	
SONY ERICSSON	
Moscow	
EVROSET	
Moscow	
FPK OJSC	
Moscow	
VGK OJSC	
Moscow	
MOSCOW HEATING COMPANY	
Moscow	
ASPAM - CARRIERS ASSOCIATION	
Moscow	
PESTOVO GOLF CLUB	
Moscow	
YUNAO	
Moscow	
DYNAMO MOSCOW FOOTBALL CLUB	
Moscow	
BELGOROD CITY SCHOOL	
Moscow	
IP GUPKINA	
Moscow	
VETERINARY INSPECTION OFFICE	
Moscow	
OLYMPIC GAMES ORGANIZING COMMITTEE	
Moscow	
SONY ERICSSON	
Moscow	



YANDEX

ARCHITECTS:

ATRIUM ARCHITECTURAL STUDIO

The Moscow offices of Yandex, the leading Russian search engine company, are an ideal embodiment of modernity – bright colors, state-of-the-art technologies, and unusual architectural solutions.

The offices occupy seven floors and employ several partition systems, highlighting a dynamic style and a light

NAYADA PRODUCTS AT THE FACILITY:

NAYADA-INTERO
NAYADA-CRYSTAL
NAYADA-STANDART

NAYADA-HUFCOR
NAYADA-DOORS
SMARTBALLS

atmosphere, while at the same time maintaining a feel of spaciousness as much as possible.

Seeking to bring into life the architect's idea, some of the solutions were customized and specifically developed for this project. The partitions were installed under inclination, using sections of complex

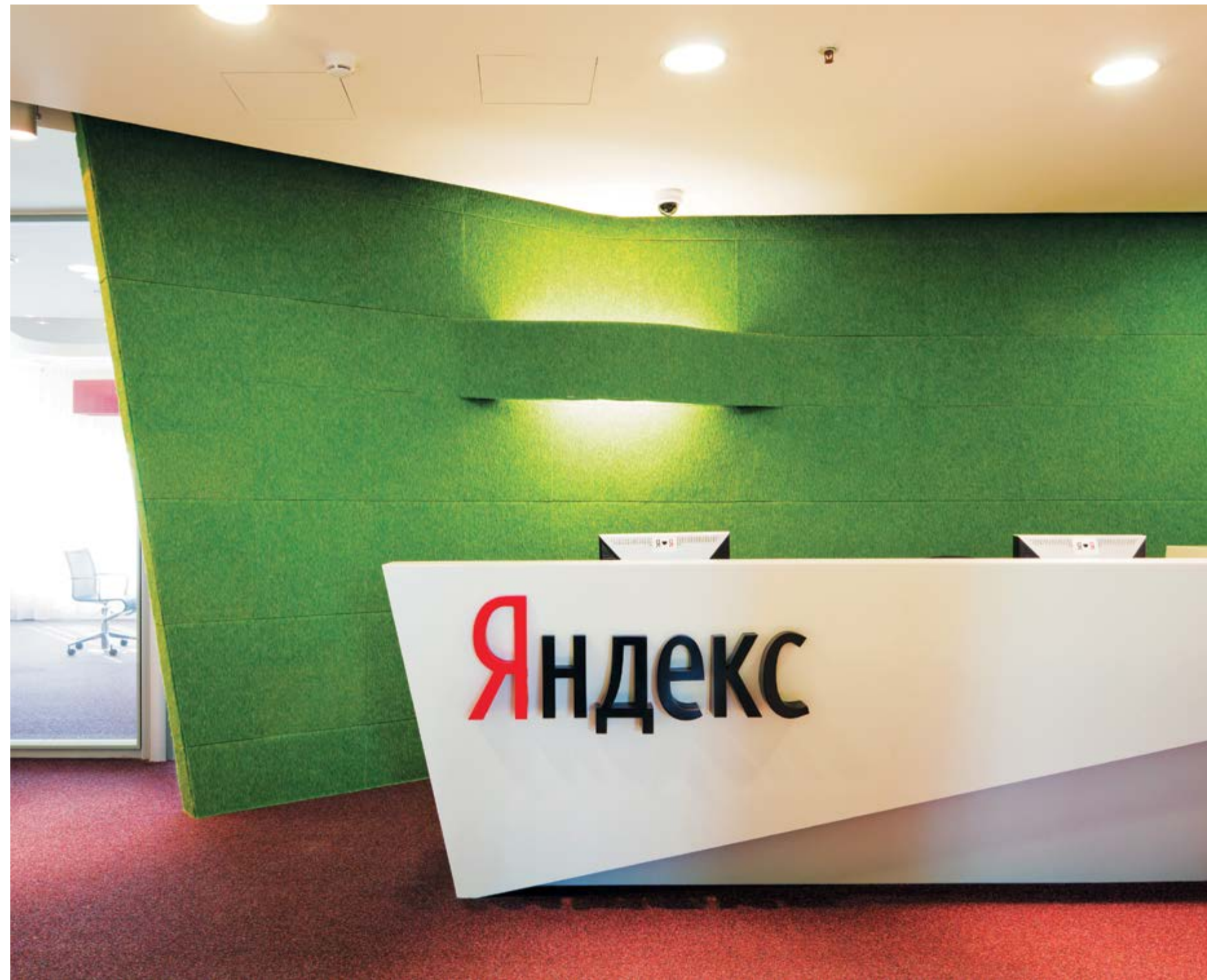
WINNER OF
«BRAND AND IMAGE»



TOTAL AREA:

20 000 m²
AREA OF THE PARTITIONS INSTALLED: 2825 m²

geometrical shapes. The meeting rooms feature NAYADA-Standart system, which is highly aesthetic and has excellent soundproofing characteristics.









YANDEX YEKATERINBURG

ARCHITECTS:

«ZA BOR» ARCHITECTURAL BUREAU

NAYADA PRODUCTS AT THE FACILITY:

NAYADA-CRYSTAL
NAYADA-STANDART
NAYADA-DOORS

WINNER OF "BEST OFFICE AWARDS"
IN "SPACE ORGANIZATION" CATEGORY



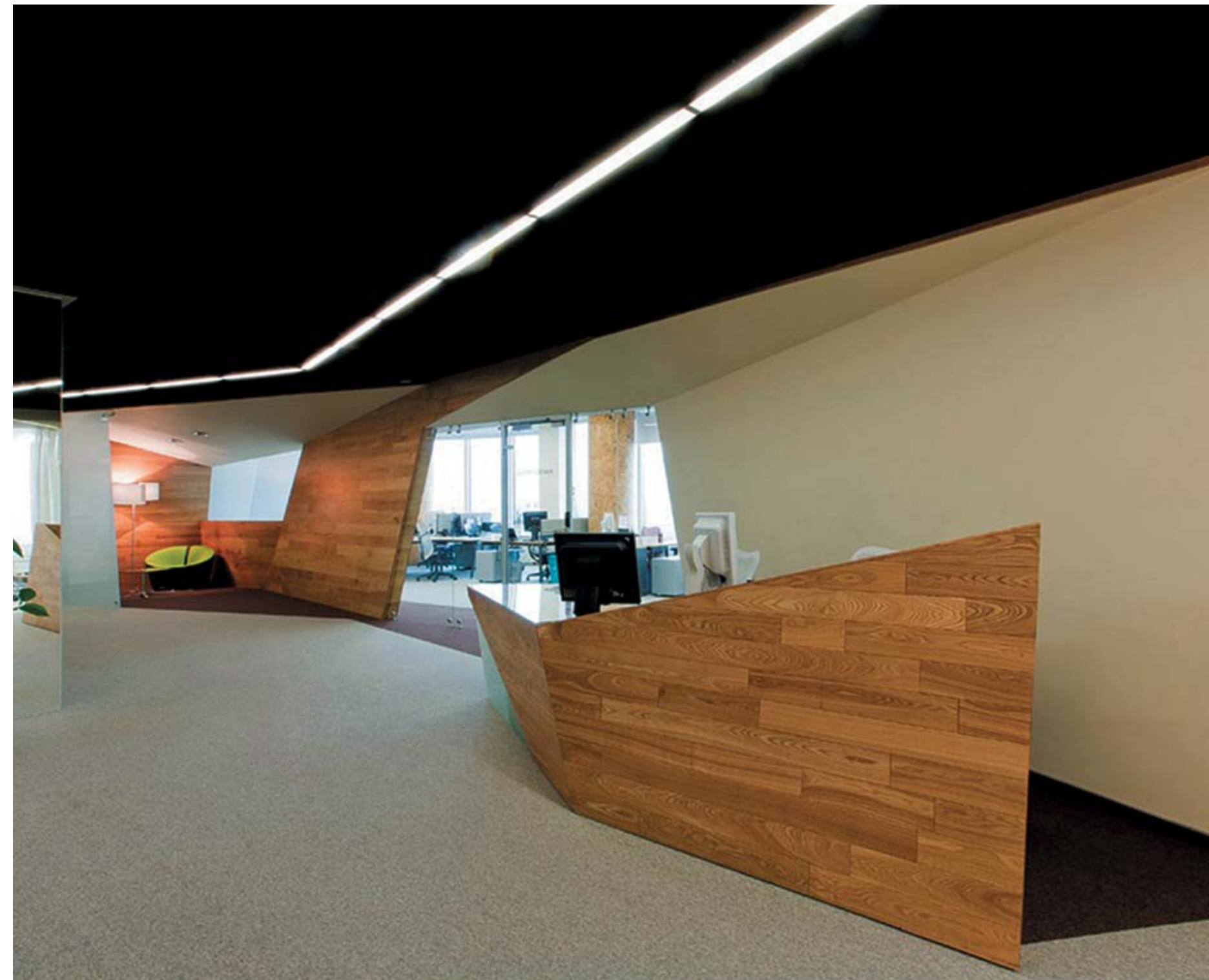
TOTAL AREA:

720 m²

The office interiors are aimed at highlighting the vigorous development of the Yandex Company. The solutions employed are also in sync with this purpose.

For instance, NAYADA-Standart enabled the creation of a unified style for the interior solutions, among other things, through the use of high quality joints and section joints of minimum areas.

The glass-containing NAYADA-Crystal system provides dispersed and calm lighting, while at the same time ensuring reliability and safety, as it is produced with the use of tempered 8-10 mm thick safety glass.







GOOGLE

ARCHITECTS:

CAMENZIND EVOLUTION

The offices of Google, a leading search engine company, have been decorated in the style of popular Russian fairy tales.

Thanks to the constructive features of NAYADA-Standart Twin, being able to have uninterrupted pictures painted on it, the Google offices have meeting rooms called the Frog Princess, Tortilla Tortoise, etc.



WINNER OF BEST OFFICE AWARDS
IN "COMFORT AND ERGONOMICS" CATEGORY



NAYADA PRODUCTS AT THE FACILITY:

NAYADA-STANDART TWIN
NAYADA-CRYSTAL
NAYADA-HUFCOR

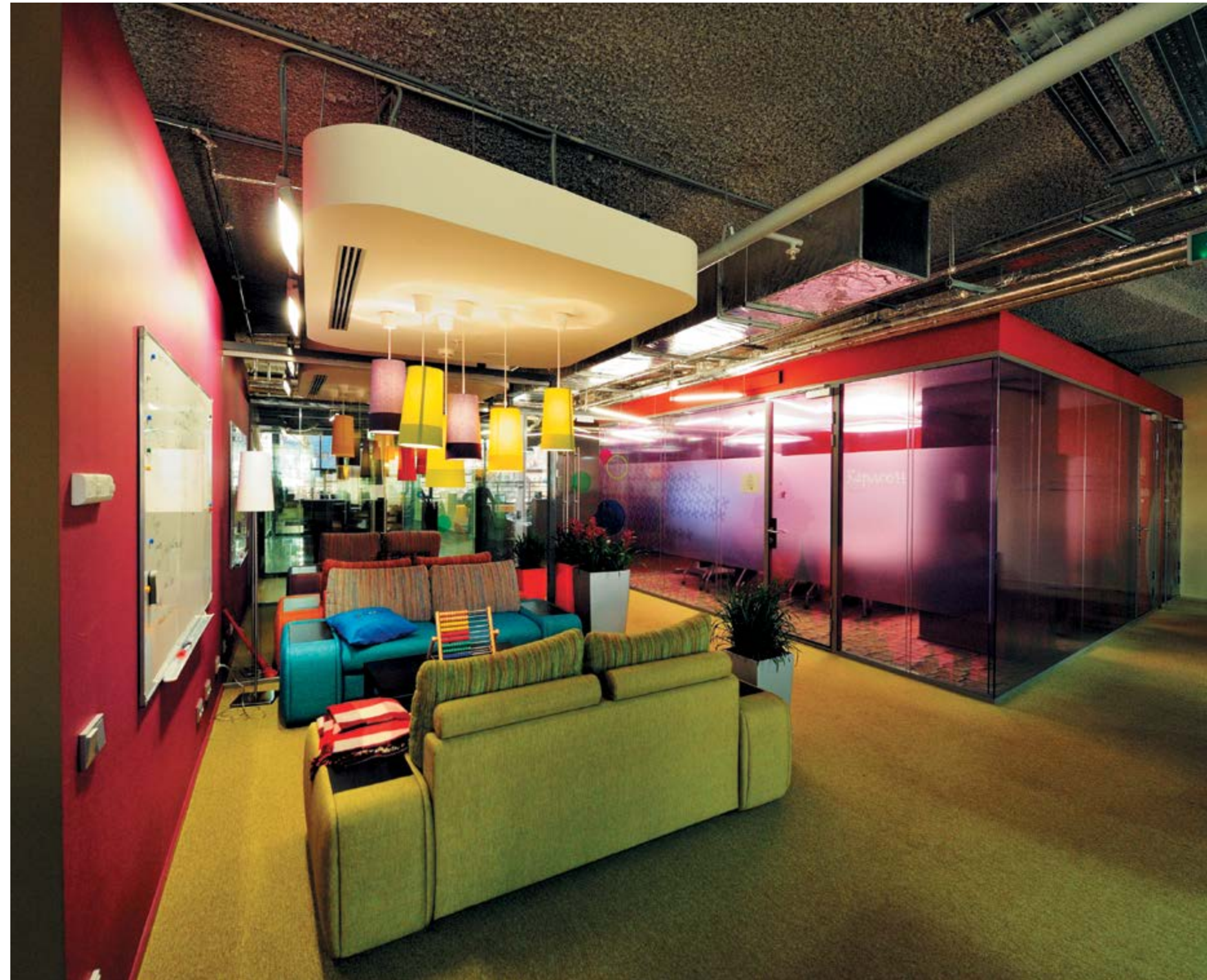
The unique feature of this system is lightness and openness, which is achieved through the joining of glass panels with hardly noticeable polycarbonate sections (two 10-mm thick tempered glass elements provide for hardness and sound insulation of the system).

TOTAL AREA:

2846 m²
AREA OF THE PARTITIONS INSTALLED: 458 m²

The rest area has been decorated with NAYADA-Crystal – these are glass partitions without joining elements or sections, giving a look of lightness as if flying in the air. NAYADA-Hufcor provided for the effective use of the conference hall: now it can be divided in independent areas.







MAIL.RU GROUP

ARCHITECTS:

BRIZSTUDIO

NAYADA PRODUCTS AT THE FACILITY:

NAYADA-TWIN
(INCLUDING SMART-
GLASS)
NAYADA-CRYSTAL
NAYADA-HUFCOR

NAYADA-DOORS

TOTAL AREA:

2 400 m²

NAYADA participated in the design of an office for two independent companies, united under the Mail.ru Group brand – the Studio Nord (Mail.Ru Games) and the popular social network Odnoklassniki (Classmates). NAYADA interiors helped the architects embody their ideas. The unusual design of the office partitions enhanced the gaming and creative atmosphere of the offices.

The conference room areas are created using NAYADA-Crystal partitions and partitions with double-glazing. In the meeting room near the reception desk, the NAYADA-Twin glass was replaced with Smart-glass.







VKONTAKTE / SAINT PETERSBURG

NOMINATION
«COMFORT AND ERGONOMICS»



ARCHITECTS:

GULLSTEN-INKINEN DESIGN AND ARCHITECTURE

NAYADA PRODUCTS AT THE FACILITY:

- NAYADA-PARAPETTO
- NAYADA-HUFCOR
- NAYADA-CRYSTAL
- NAYADA-STANDART
- NAYADA-FIREPROOF EI-45
- NAYADA-RECEPTION
- NAYADA-DOORS

TOTAL AREA:

885 m²

The offices of VKontakte Company embody the ideas of a social network, uniting people around the world. Graphics play the central role within the office design. Graphics are everywhere: on the add-on ceiling structures, walls of offices, and glass partitions of meeting rooms.

NAYADA-Standart and NAYADA-Crystal are a major part of the interior, while graphics, replicating the interior, provide for visual security, creating comfortable conditions for employees, working behind the glass walls, and consequently stimulating productivity







MICROSOFT TECHNOLOGY CENTER

ARCHITECTS:

UNK PROJECT

NAYADA PRODUCTS AT THE FACILITY:

NAYADA-FIREPROOF
 NAYADA-INTERO
 NAYADA-TWIN
 NAYADA-CRYSTAL

NAYADA-HUFCOR
 NAYADA-DOORS

TOTAL AREA:

1 300 m²

The new Microsoft Technology Center in Moscow is a platform for the presentation of new products and technologies, the holding of lectures and training seminars, as well as testing innovative Microsoft solutions.

Training takes place in two large classrooms, separated by a NAYADA-Hufcor sliding partitions. The sound

insulation of these transformer partitions is 42 dB. The semantic "core" of the entrance area became the glass "exhibition server room", created using NAYADA-Fireproof partitions. NAYADA specialists successfully solved a difficult technical problem – the installation of fire-resistant partitions at an angle.

The small meeting rooms have NAYADA-Twin glass doors and partitions, with double glazed windows and a higher degree of insulation, as well as all-glass NAYADA-Crystal units with matte patterns.







MICROSOFT TECHNOLOGY CENTRES

ARCHITECTS:

UNK PROJECT

NAYADA PRODUCTS AT THE FACILITY:

NAYADA-HUFCOR
NAYADA-FIREPROOF
NAYADA-STANDART

NAYADA-DOORS

TOTAL AREA:

1200 m²

The Customer's idea about this facility was to provide simplicity and comfort in the technology center's interior. That is why the colors are as restrained as possible, with white surfaces generally dominating here.

In total, there are 16 "conventional" workplaces (certain rooms are equipped with NAYADA-Standart systems;

the glass is matted using the Customer's stencil designs); the other workplaces are designed for trainees.

The training takes place in two vast classrooms separated with NAYADA-Hufcor operable partitions. The entrance of the office is adjacent to a server room, equipped with a NAYADA-Fireproof fire resistant

system; the partition glass is tinted with an unconventional chocolate color film (7024). The transparent partition enables visitors to directly observe the operations of Microsoft technologies. Twenty doors have been installed in the office.



DISCOVERY NETWORKS

ARCHITECTS:

S.OGANESYAN
MERVYN CALLAGHAN

NAYADA PRODUCTS AT THE FACILITY:

NAYADA-REGINA LINE NAYADA-REGINA
NAYADA-STANDART
NAYADA-HUFCOR

TOTAL AREA:

670 m²

The offices of Discovery Networks, a telecommunications company, have combined many complex elements of geometric shapes.

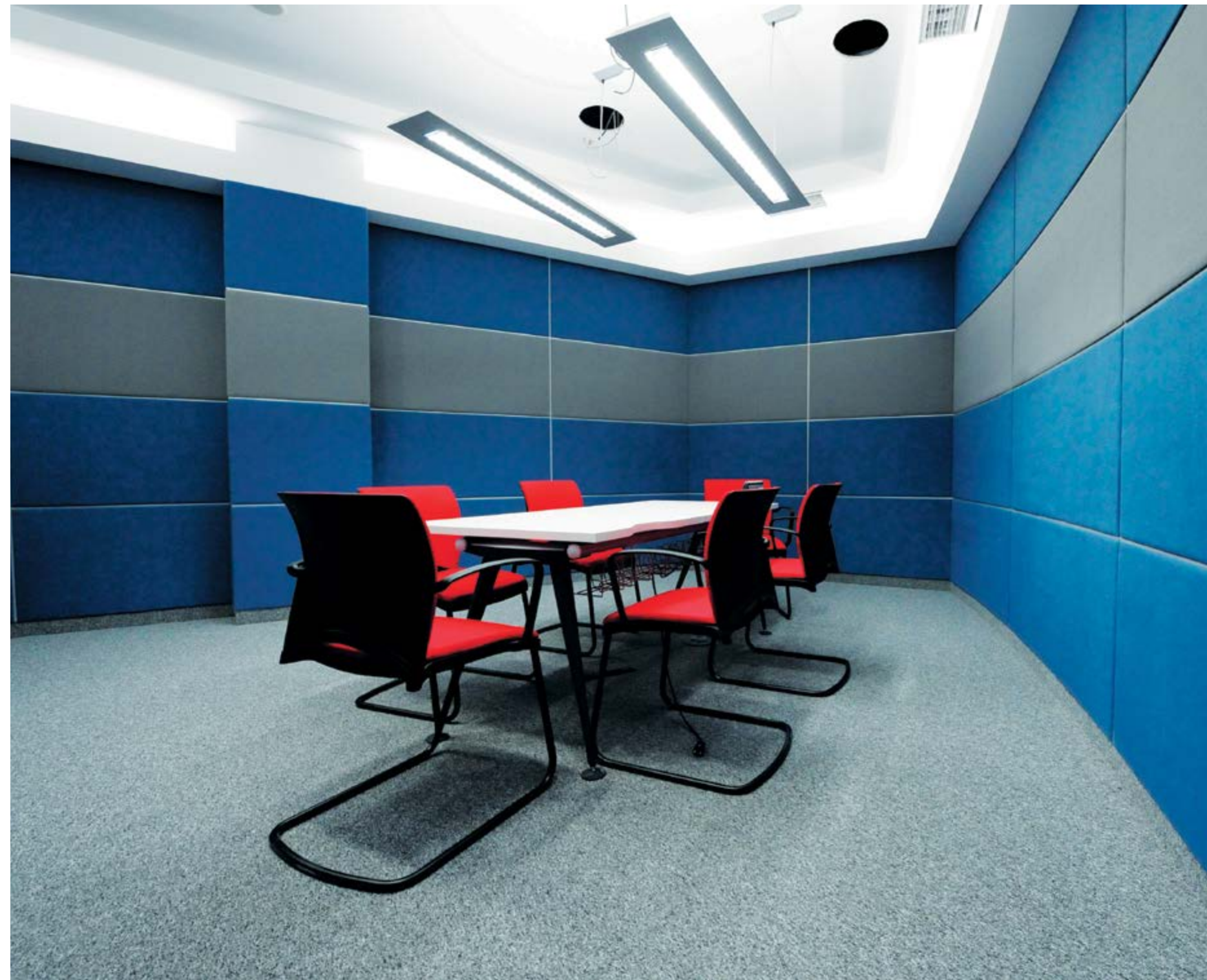
Abundance of light within the office is intensified by NAYADA-Standart semi-transparent partitions with curved glass, together with oak veneer-clad panels. Snow-white NAYADA-Hufcor panels, separating the

meeting room from the rest area, provide for a favorable contrast with the bright furniture and walls.

The meeting rooms and offices have NAYADA-Regina Line systems, with curved-line veneered and textile-clad soundproof panels, providing excellent acoustic characteristics – a must for the normal functioning of a media holding.

The central section of the offices is decorated with an exclusive structure – the NAYADA-Regina Line system, clad in oak veneer.







NOKIA

ARCHITECTS:

GULLSTEN INKINEN INTERIOR ARCHITECTS

The office interiors of Nokia Company, the world's leading mobile communications company, resemble a telephone model.

For the Nokia offices we have developed and installed a unique system of all-glass partitions, radially bent at the angles with a double-glass surface. System sections are produced with the use of MDF panels,



NAYADA PRODUCTS AT THE FACILITY:

NAYADA-STANDART,
NAYADA-CRYSTAL,
NAYADA-REGINA LINE
NAYADA-HUFCOR

NAYADA-DOORS
NAYADA-RECEPTION,
LEPOTA

mounted on bent aluminum sections. Glass panels are mounted at the two sides of each panel. The partition surface is in the same plane with the walls, giving a look of an unbroken interior.

The offices are divided into various areas with NAYADA-Crystal partitions, painted in Nokia corporate colors – orange,

TOTAL AREA:

2700 m²

green and blue. The reception area features NAYADA-Crystal with matted sections, highlighting the laconic style of the office entrance area.

The Nokia offices have been built to ideally match the requirements for organization of business processes





ALCATEL-LUCENT

ARCHITECTS:

VUK VUCKOVIC – SARAP
MAJA URH JOVANOVIĆ
MARREY O'LIRA

NAYADA PRODUCTS AT THE FACILITY:

NAYADA-STANDART LITE
NAYADA-CRYSTAL
NAYADA-DOORS

TOTAL AREA:

4700 m²

Alcatel-Lucent, a telecommunications and computer hardware supplier, has realized a progressive flexibility concept (meaning "flexibility and adaptability" of the available space), while preserving the following core idea: none of the employees, except for directors, should have a fixed working place.

Open space instead of detached offices. At the same time, the focus is on convenience and comfort for each and every employee.

Using light and discreet NAYADA-Standard Lite and NAYADA-Crystal partitions enabled us to combine these seemingly incompatible features: each and every employee is open for interaction, while at the same time having a place for detached and concentrated work.





SAMSUNG

NAYADA PRODUCTS AT THE FACILITY:

NAYADA-CRYSTAL
NAYADA-HUFCOR
NAYADA-REGINA DOORS

TOTAL AREA:

1800 m²
PRODUCTION AREA AT THE SITE: 500 m²

Products of the NAYADA Company were used to furnish the Moscow offices of the famous Korean brand Samsung Electronics. Preciseness of the lines and shapes proposed for the decoration of the offices helped create a comfortable, modern and sophisticated area for this global brand. Work areas for Samsung specialists were created using NAYADA-Crystal partitions.

No-profile glass partitions fit perfectly to the main light tones of the office, emphasizing minimalism, open spaces and an at-ease atmosphere. A space that is visually open and not burdened by blind constructions, at the same time offers high ergonomic and acoustic characteristics required for the staff's everyday work.

The shape of the central area of the office became a separate decorative solution. A NAYADA-Crystal glass partition has formed this area into the shape of an arc.

Three types of doors, most of them NAYADA-Regina, were made in non-standard sizes of openings. For their



SPORTS, PUBLIC AND STATE INSTITUTIONS

RAILWAY STATIONS

STADIUMS

THEATRES

UNIVERSITIES

AIRPORTS

**OXFORD ENGLISH ACADEMY**

Vladivostok

PRIDE WELLNESS CLUB50

Moscow

RIVIERA

Kiev

SEA LAND

Moscow

TNT EXPRESS WORLDWIDE

Moscow

TRANSIMPEKS

Moscow

WELLA

Moscow

WELLNESS CLUB «MANHATTAN»

Chelyabinsk

WORLD CLASS

Moscow

MUTISHI ARENA48

Moscow

«SIBERIA» AIRLINE

Moscow

«YAKUTIA» AIRLINE

Moscow

«CARAT» AIRLINE

Chelyabinsk

ADMINISTRATION OF KIROV REGION

Kirov

AREAL CONGRESS HOTEL

Moscow

ARENA-NORTH, THE ICE PALACE

Krasnoyarsk

AVTOVAKZAL CENTRAL

Minsk

AIRPORT

Vladivostok

«DOMODEDOVO» AIRPORT

Moscow

«SHEREMETYEVO» AIRPORT

Moscow

AREAFLOT74

Moscow

BSU

Minsk

BELARUSIAN RAILWAYS

Minsk

LIBRARY. LENIN

Moscow

GRAND THEATRE

Moscow

VIVALDI PLAZA

Moscow

VNIIGAZ

Moscow

VNUKOVO AIRPORT72

Moscow

VOLGA-DNEPR

Moscow

SKATING RINK MEDEO

Almaty

GAZPROM-NEFT

Krasnodar

«EVENING MOSCOW» NEWSPAPER

Moscow

GOLF CLUB

Kiev

HOTEL CROWN PLAZA LIGOVSKY

St. Petersburg

HOTEL MOSCOW

Moscow

HOTEL UKRAINE

Moscow

EASTERN STATE UNIVERSITY

Vladivostok

DEPARTMENT OF FINANCE

Moscow

CHILDREN'S ENTERTAINMENT CENTER

Vladivostok

FC DYNAMO MOSCOW

Moscow

HEALTH CENTER54

Moscow

DOMODEDOVO

Moscow

EVROSTROYBILDING

Moscow

CRYSTAL FACTORY

Moscow

FITNESS CENTER (VIP CLASS)60

Moscow

INSTITUTE OF RAILWAY TRANSPORT

Krasnoyarsk

INSTITUTE FOR SOCIAL AND ECONOMIC**DEVELOPMENT OF THE TERRITORY OF****SCIENCES**

Vologda

INTERCONTINENTAL

Minsk

MOSCOW CITY HALL

Moscow

KAZAN 2013 EXECUTIVE DIRECTORATE

Kazan

NEW WAVE CINEMA

Vladivostok

GALAXY CINEMA

Vladivostok

CLUB GRAND HAVANA ROOM

Moscow

KOKTEBEL FILM COMPANY

Moscow

RED HILLS

Moscow

CULTURAL CENTER «RUSSIAN HOUSE»

Vologda

KURSK STATION

Moscow

ICE PALACE40

Moscow

LENINGRAD STATION

Surgut

LENINGRAD STATION

Moscow

LOTTEPLAZA

Moscow

MARRIOTT

Moscow

MSU

Moscow

INTERNATIONAL SKI JUMP COMPLEX

Almaty

MINISTRY OF RAILWAYS

Moscow

MINISTRY OF FINANCE

Moscow

MINSK COLLEGE OF BUSINESS

Minsk

MIRATORG

Bryansk

MSLA

Moscow

MOSCOW SCHOOL OF MANAGEMENT

Moscow

«SKOLKOVO»64

Moscow

MFYUA

Moscow

MOE

Moscow

MOSCOW CITY HALL

Moscow

THE ORGANIZING COMMITTEE

Moscow

OLYMPICS

Moscow

PUBLIC LAW INSTITUTE

Vladivostok

PEPSIKKO HOLDINGS

Moscow

PLANET FITNESS

Moscow

EMBASSY OF GERMAN

Moscow

EMBASSY OF INDONESIA

Moscow

EMBASSY OF ITALY

Moscow

THE UN OFFICE

Moscow

«ART-CLUMBA» RESTAURANT

Moscow

RAILWAYS76

Moscow

RIA NOVOSTI

Moscow

DCS RUSSIAN INTERIOR MINISTRY

St. Petersburg

SNEZH.KOM

Moscow

THUNDER MAGNET

Krasnoyarsk

DANCE CLUB GALLA DANCE

Krasnodar

FOMENKO THEATRE70

Moscow

TELECOM-SOYUZ

Moscow

TNT

Moscow

NEWS MEDIA78

Moscow

CHITA

University of Natalia

NESTEROVA76

St. Petersburg

FSB

Moscow

BOOKING CENTER OF TOURISM

Moscow

CENTER FOR FAMILY PLANNING

Moscow

NATIONAL SPORTS COMPLEX**OLIMPIYSKIY**80

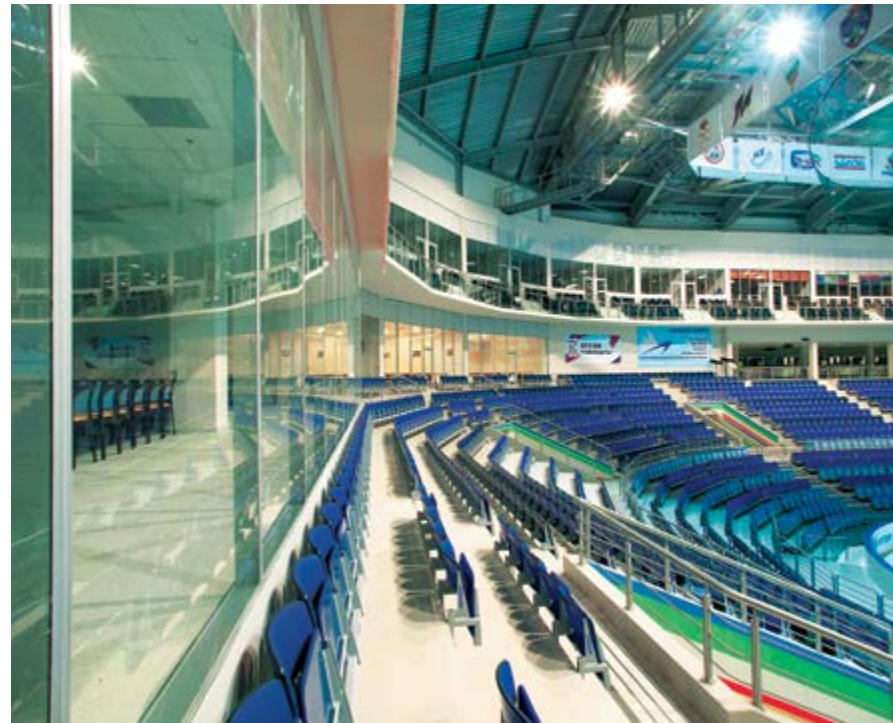
Kiev

AIR TRANSCEM

Moscow

SHEVRON62

Moscow



MYTISHI ARENA

NAYADA PRODUCTS AT THE FACILITY:

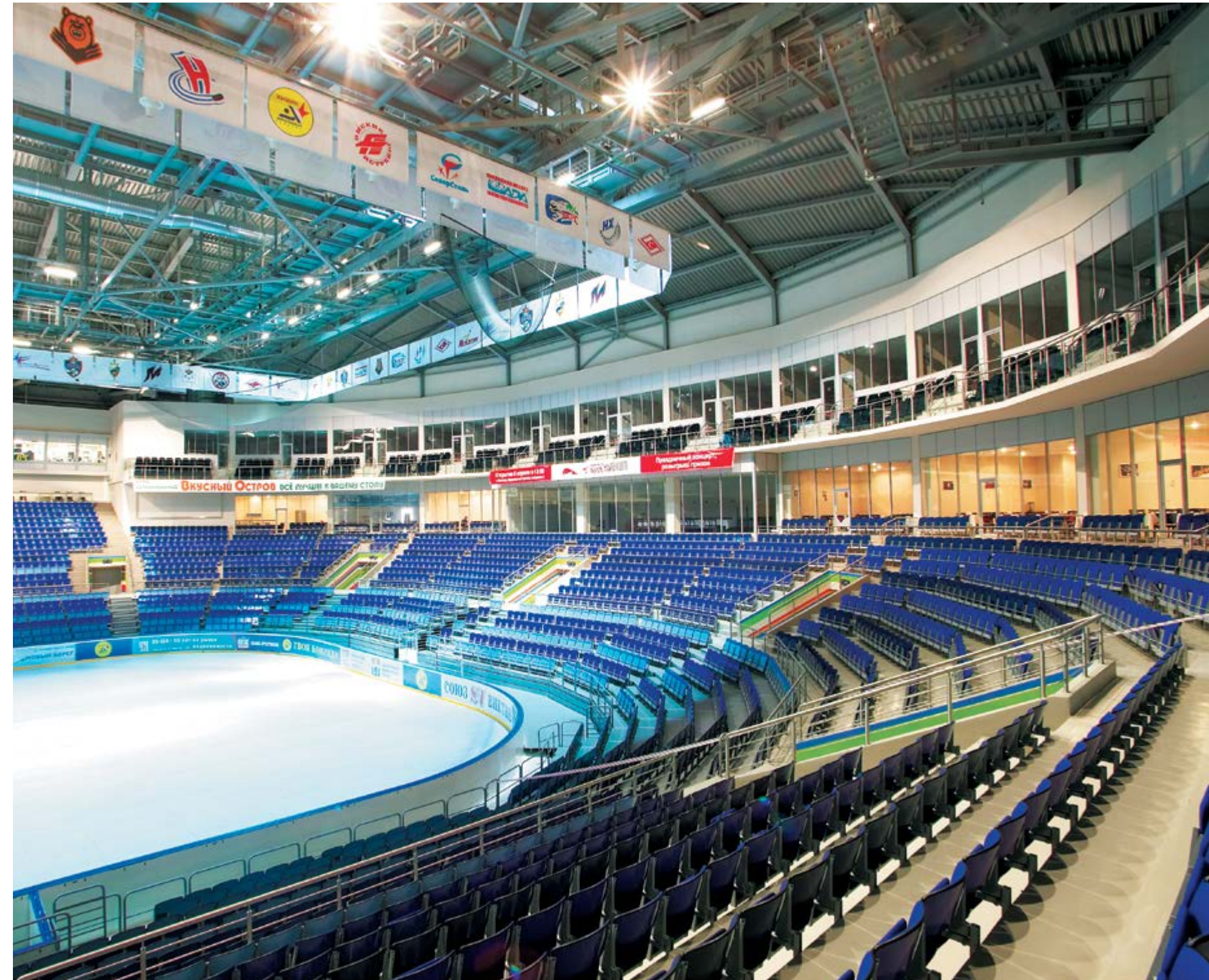
NAYADA-RAUMANN
NAYADA-DOORS

TOTAL AREA:

AREA OF THE PARTITIONS INSTALLED: 1021 m²

The Ice Stadium is a high-technology building, with the capacity to host 9,000 visitors. NAYADA-Raumann partitions, with special safe K4 plastic, have enabled us to meet the set requirements of maximum transparency, visibility and safety in decorating the tribunes, VIP-lounges, commentator rooms and other premises, located on the two floors around the perimeter of the ice rink.

Constructive features of the system enabled us to round up the angles by 15°, thanks to which the partitions ideally replicate the oval shape of the ice rink. Installed supporting elements, strengthened by the steel pipes, enabled bringing the partitions to a height of over 5 meters, which is optimal for such a facility.





PRIDE WELLNESS CLUB, ZHUKOVKA XXI

NAYADA PRODUCTS AT THE FACILITY:

- NAYADA-STANDART
- NAYADA-CRYSTAL
- NAYADA-REGINA LINE
- NAYADA-HUFCOR
- NAYADA-DOORS
- NAYADA-RECEPTION
- LEPOTA

TOTAL AREA:

5000 m²

The wellness center, located in the City of Barvikha, is a venue for comfortable sports trainings and leisure.

NAYADA-Standart and NAYADA-Crystal structures, giving a look of lightness, favorably set off business and guest areas. Movable NAYADA-Hufcor partitions give the premises a look of functionality, enabling the easy division of large halls into small fitness-training rooms.

NAYADA doors are a unique element within this interior. Depending on the purposes and design of each room, there are all-glass, fire-safe, laminated and exclusive doors, clad in natural valuable wood species veneer. Furniture plays a unique role within the center's interior, providing a feeling of elegance and exquisiteness.







HEALTH CENTER

ARCHITECTS:

IRINA NOVOSELOVA

NAYADA PRODUCTS AT THE FACILITY:

NAYADA-CRYSTAL
NAYADA-REGINA LINE

TOTAL AREA:

3000 m²
AREA OF THE PARTITIONS INSTALLED: 600 m²

NAYADA products play a key role in defining the style of the sophisticated, dignified and comfortable interior within the fitness center in Moscow.

For the project to be implemented, each and every task needed to be executed with meticulous attention to details. The materials used are start-of-the-art and of the highest quality.

According to the architect's request, each floor was decorated with an individual veneer type.

The hallways and ceilings were clad in decorative veneered panels. Exclusively designed doors were inlaid with valuable-wood veneer. Offices feature comfortable furniture, which has been selected and manufactured at our own production facility, in sync with the center's style.









FITNESS CENTER (VIP CLASS)

NAYADA PRODUCTS AT THE FACILITY:

NAYADA-REGINA LINE

TOTAL AREA:

AREA OF THE PARTITIONS INSTALLED: 700 m²

Sports facilities clad in valuable timber veneer are very unique.

Panels clad in maple veneer, not only decorate the sports hall walls and ceiling, but also "take a punch" of the ball. This was made possible through the use of the NAYADA-Regina Line structural system, providing the best opportunities for implementing various company systems.

The complex radius-shaped structure of the vaulted ceiling and walls, and abundance of built-in details required great attention to every minute detail when cladding in veneer. Most of the panels were cut on the spot, to ensure the correct dimensions and achieve tight wood patterns.

Veneer in combination with glass has endowed these premises with the feel of warmth and exquisiteness.





CHEVRON

ARCHITECTS:

SERGEY ESTRIN ARCHITECTURAL STUDIO

NAYADA PRODUCTS AT THE FACILITY:

NAYADA-RECEPTION
NAYADA-CRYSTAL
NAYADA-REGINA LINE

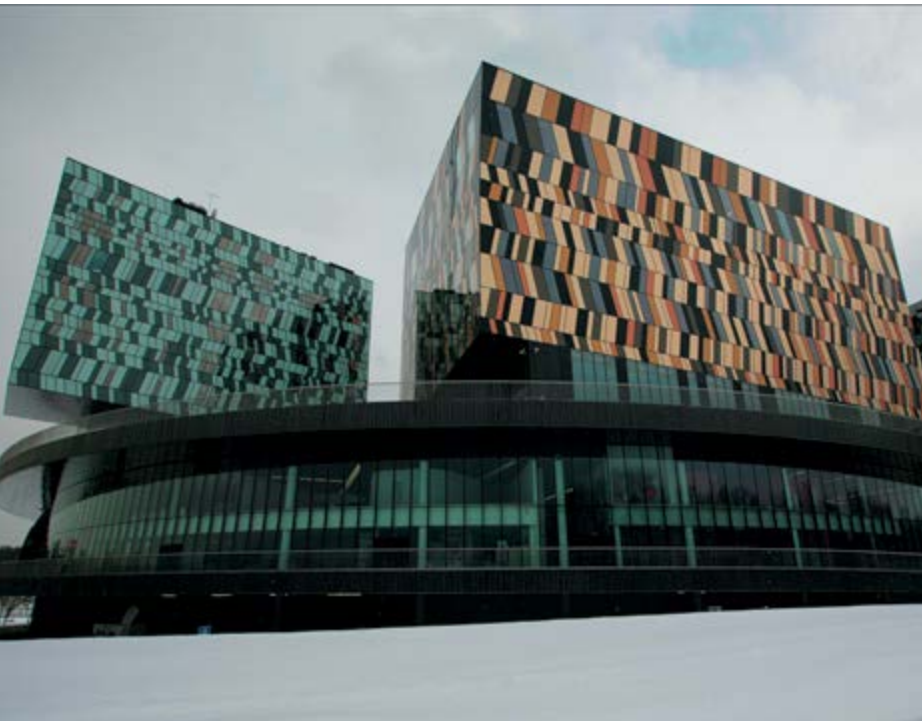
This global energy and petrochemical company has renewed its already existing hall premises design.

A light, modern reception zone, created for the world-known market leader, was decorated with natural light wood veneer. NAYADA-Crystal glass partitions and doors served to provide the optimum framing, while adding more light and creating a visually enlarged space.



TOTAL AREA:

PREMISES AREA: 1,800 m²



SKOLKOVO BUSINESS SCHOOL OFFICE

ARCHITECTS:

A-B STUDIO

NAYADA PRODUCTS AT THE FACILITY:

NAYADA-STANDART
NAYADA-STANDART-TWIN
NAYADA-CRYSTAL
NAYADA-REGINA.LINE
NAYADA-HUFCOR

NAYADA-DOORS
NAYADA-FIREPROOF
NAYADA-PARAPETTO
TOILET CUBICLES

TOTAL AREA:

58 000 m²

When the challenging Skolkovo project was just starting up, no one in Russia had any experience of building business schools.

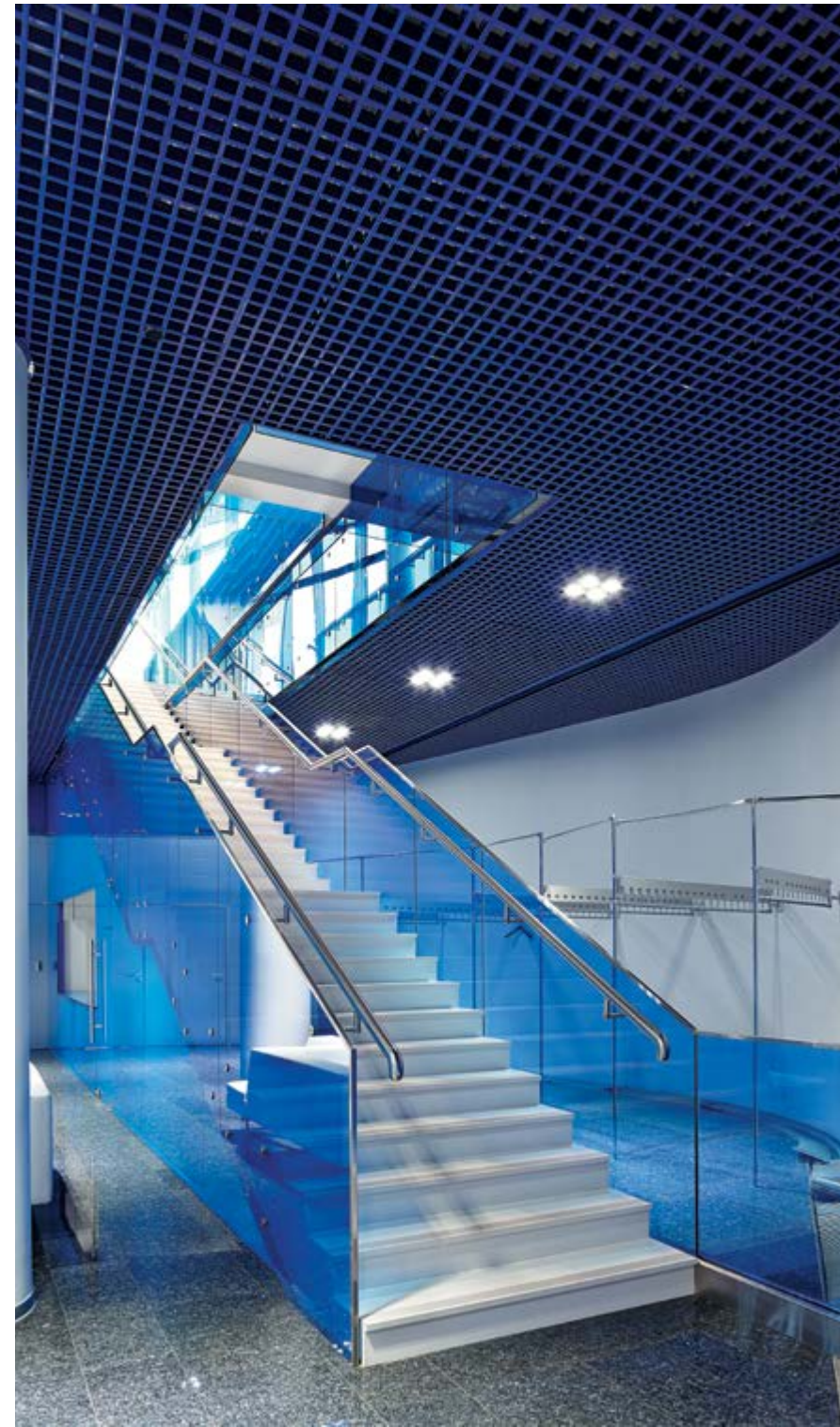
Architects and managers visited around 50 educational institutions around the world, attempting to work out their own concepts on the optimal space and decoration solutions.

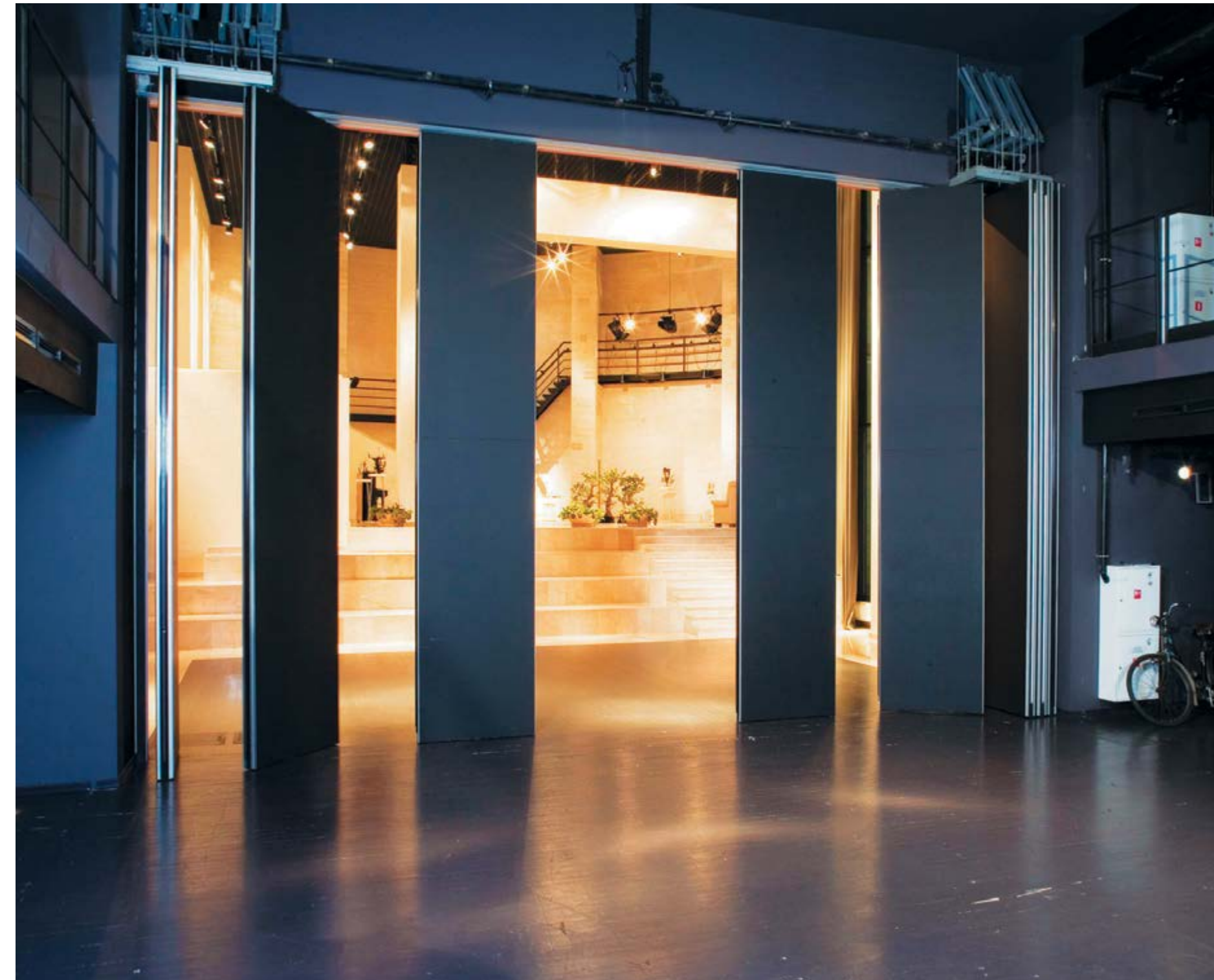
As a result, seeking to keep the feel of an immense space, the office part of the business school was set up in the form of a small town, with its own streets, houses, yards and alleys.

NAYADA, being a leading developer and producer of interior partitions systems in Russia, the CIS and the EU, became one of the suppliers for this unprecedented project.









MOSCOW THEATER P.N. FOMENKO

ARCHITECTS:

ARCHITECTURAL BUREAU OF THEATER ARCHITECTS

NAYADA PRODUCTS AT THE FACILITY:

NAYADA-HUFCOR

TOTAL AREA:

300 m²
STRUCTURE AREA: 100 m²

The audience hall of this theater, depending on the play being performed, can be turned into a classic amphitheater, divided into two parts by the scene area, or can be a single-space area together with the lobby. Such transformation capabilities were made possible through the use of the movable NAYADA-Hufcor system.

The height of the movable wall is 5.2 meters, with the soundproofing characteristics of no less than 42 dB.

NAYADA-Hufcor system is designed to fulfill several curtain functions, providing the back part of the scene and as a decoration element. To enable this solution, NAYADA-Hufcor had to be mounted onto a vertical wall, and not the ceiling overlaps, as is usually done. There were

developed special elements of the track mounting: triangular-shaped support elements, installed above the parking area, enabled the required strength reserves and correct functioning of the overall structure.



VNUKOVU AIRPORT

ARCHITECTS:

METROGIPROTRANS

The passenger terminal at the Vnukovo Airport has implemented innovative solutions.

The NAYADAO-Parapetto partitions system is used as fencing in the balconies for public, stretching for 2 kilometers.

Exquisite glass structures, without joints and sections provide the look of a light structure, as if it is flying



NAYADA PRODUCTS AT THE FACILITY:

NAYADA-PARAPETTO
NAYADA-HUFCOR
NAYADA-CRYSTAL
NAYADA-STANDART

NAYADA-FIREPROOF EI-45
NAYADA-RECEPTION
NAYADA-DOORS

in the air. Decorative stainless covers on the glass elements set off the complex structure.

Air vents, in the mezzanine section of the hall, are clad in curved glass. Curve-lined trapezium-shaped glass elements, bent at a particular angle, cover the air vent structures.

TOTAL AREA:

17 4000 m²
AREA OF THE PARTITIONS INSTALLED: 4000 m²

Another unusual solution is the use of fire-preventing stained-glass panels in shapes replicating the waved lines of the ceiling.





AEROFLOT RUSSIAN AIRLINES

ARCHITECTS:

SERGEY ESTRIN ARCHITECTURAL STUDIO

NAYADA PRODUCTS AT THE FACILITY:

NAYADA-CRYSTAL
NAYADA-STANDART

TOTAL AREA:

35 500 m²

The offices of Aeroflot Company, one of the world's oldest airlines, are distinguished by a modern and vigorous style. The interior features bright, virtually spectral colors, and super-graphics.

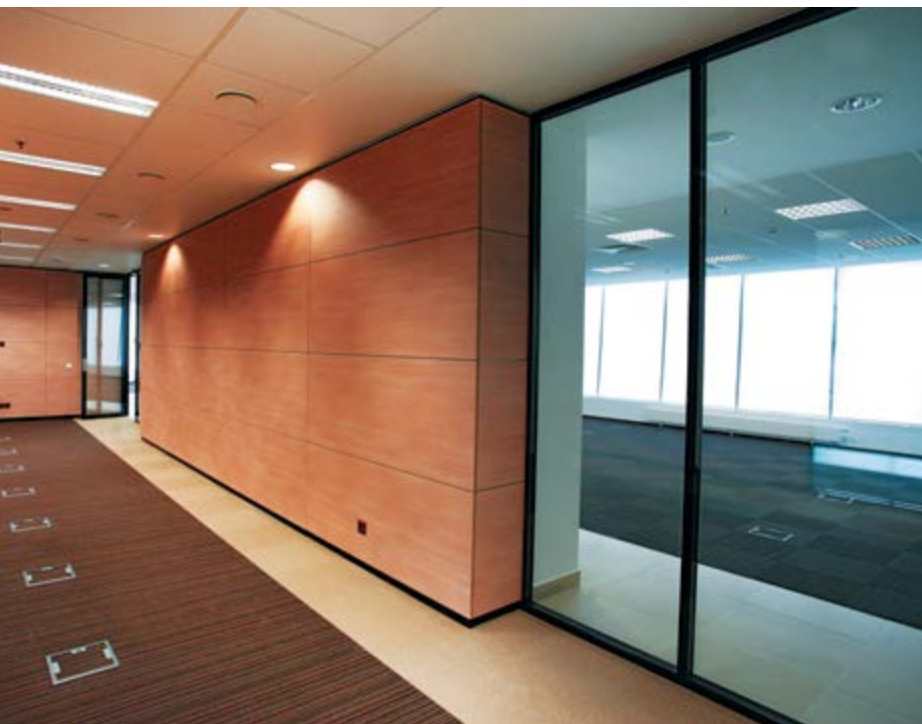
NAYADA-crystal partitions are used for color differentiation of the office areas, as artificial walls. The visible part of the system does not have any mounting elements or details of different colors. Glass veneer

replicates the curves and openings within the walls.

Glass painting work was carried out at NAYADA production facilities, using own technologies. Partitions and doors, integrated within them, replicate the colors in each room, giving a look of an ideal surface.

The project included the production of 68 doors, featuring excellent soundproofing characteristics.





RUSSIAN RAILWAYS COMPANY

ARCHITECTS:

SERGEY ESTRIN ARCHITECTURAL STUDIO

NAYADA PRODUCTS AT THE FACILITY:

NAYADA-STANDART
NAYADA-HUFCOR
NAYADA-REGINA-LINE

NAYADA-OPTIMA+
NAYADA-INTERY
NAYADA-DOORS

TOTAL AREA:

22 000 m²

The offices of the Russian Railways Company, the world's leading railway company, occupy 10 floors, and have their internal areas have been decorated by NAYADA – a project that was implemented in record time. The works on the VIP-floor's interior were completed in just one week. NAYADA Company and its employees can, no doubt, make a claim to be recorded in the Guinness Book of Records!

Fixed transparent partitions and full-height windows give a look of spaciousness, filled with clearness and lightness. Interacting with NAYADA structures, cylinder-shaped monumental columns, placed on each floor in large illuminated halls, give a feel of integrated and composed interiors.

NAYADA doors have been installed on all floors of the offices. A wide selection of colors and finishing materials enables each and every one of the 100 doors to be unique.





NEWS MEDIA

ARCHITECTS:

KUBUS ARCHITECTURAL BUREAU

NAYADA PRODUCTS AT THE FACILITY:

NAYADA-REGINA
NAYADA-TWIN
NAYADA-DOORS

NAYADA-STANDART
NAYADA-PARAPETTO
NAYADA-FIREPROOF

TOTAL AREA:

7000 m²
AREA OF THE PARTITIONS INSTALLED: 1600 m²

The interior design within the offices of News Media, a major media holding, was created in record-breaking time – in less than five months. The interior features a wide range of NAYADA products.

This was the first time the company installed the inclined NAYADA-Fireproof partitions, and the inclined NAYADA-Twin partitions, separating the TV studio from open-space areas and control rooms. The installed

partition systems provided for the required level of acoustic insulation.

The inclined partitions provided the required conditions for filming to be carried at the TV studio, while preventing flares from appearing in camera lenses.

NAYADA has collaborated many times with News Media, to decorate other offices of this media holding.





NATIONAL SPORTS COMPLEX OLIMPIYSKIY

ARCHITECTS:

GMP ARCHITEKTEN VON GERKAN MARG UND PARTNER

NAYADA PRODUCTS AT THE FACILITY:

NAYADA-STANDART
 NAYADA-FIREPROOF
 NAYADA-HUFCOR
 NAYADA-PARAPETTO

TOTAL AREA:

168 800 m²

NAYADA won the open tender for the right to participate in the renovation of Ukraine's main sports arena, one of the Europe's best stadiums, which hosted the Euro-2012.

The main area of the stadium, the "Sports Court", was equipped with fire-safe NAYADA-Fireproof EI-60 partitions and 25 mm thick "triplex" multi-layer glass partitions.

The VIP area features NAYADA-Standart and NAYADA-Crystal partitions, as well as NAYADA-Parapetto fencing systems. The conference hall was equipped with movable NAYADA-Hufcor partitions, enabling the effective use of internal spaces.

The expedient execution of a number of operations enabled us to wrap up the work ahead of schedule.



THE NATALIA NESTEROVA ACADEMY

ARCHITECTS:

DESIGN CLASS

NAYADA PRODUCTS AT THE FACILITY:

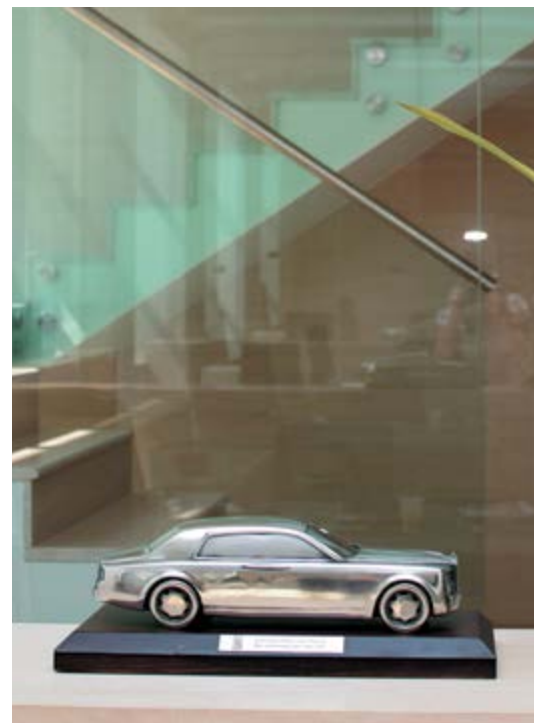
NAYADA-HUFCOR

The Academy needed a partition installed inside the lecture hall, to enable the room to be divided, while maintaining excellent soundproofing characteristics.

It was decided to install the movable soundproof NAYADA-Hufcor partition, featuring easy maintenance – with just one motion, the single lecture hall is divided into two functionally independent rooms. The movable wall partition employs aluminum sections and panels, clad in decorative cover-ups.

The Academy has multi-step design, necessitating the partition to cross areas with different floor heights. When folded, each section of the partition is moved into special openings made at every step, ensuring maximum soundproof characteristics of 54 dB.



AUTOMOBILE DEALERSHIPS
**AUDI**

Chelyabinsk
Moscow
St. Petersburg

BENTLEY..... 86

Москва
St. Petersburg

BMW

N-Novgorod
Krasnoyarsk
Chelyabinsk
Penza
Moscow
St. Petersburg

CHEVROLET

Kazan
Vladivostok
St. Petersburg

CITROEN

Magnitogorsk

FORD

Chelyabinsk
Cherepovets
Moscow
Perm

GENERAL MOTORS

Moscow

GM ENGINEERING

Almaty

HARLEY DAVIDSON

Moscow

HONDA

Cherepovets
Moscow
St. Petersburg

HUYNDAI

Almaty
Novorossiysk
Krasnoyarsk
Magnitogorsk
Cherepovets
Arkhangelsk
St. Petersburg

INFINITI

Moscow
Samara

JAGUAR LAND ROVER..... 90

Moscow

KIA

Bryansk
Moscow

LADA

Minsk
Tver

LEXUS

Moscow

KIEV WEST

Tyumen

MAN

Elabuga

MAZDA

N-Novgorod
Moscow
St. Petersburg

MERCEDES

Krasnodar
Moscow
Kiev
Almaty

MOTOR ARSENAL

Minsk

MITSUBISHI

Kiev
Penza
Moscow

NISSAN

Kazan
Chelyabinsk
Magnitogorsk
Moscow
St. Petersburg

OPEL

Kazan
Vladivostok
St. Petersburg

PEUGEOT

Minsk
Moscow
St. Petersburg

RENAULT

Chelyabinsk
Bryansk
Tver
Vladivostok
Moscow

ROLF

Moscow

ROLLS-ROYCE..... 88

Moscow

SKODA

Kazan
Magnitogorsk
Chelyabinsk
Tyumen

SUBARU

Almaty
Magnitogorsk
St. Petersburg

SUMOTORI

Vladivostok

TOYOTA

Moscow
St. Petersburg
Krasnodar
Almaty
Magnitogorsk
Cherepovets
Tver
Kiev
Tyumen
Perm
Rostov-on-Don

TRUCK CENTER

Elabuga

VOLKSWAGEN

Moscow
Kiev
Chelyabinsk
Kazan
Krasnoyarsk
Penza

VOLVO

Chelyabinsk
Minsk

YAMAHA

Cherepovets
Moscow

AVTODOM

Moscow

AVTOZAYM

Moscow

AVTOMIR

Moscow

CARS RUSSIA

Moscow

AUTO PRESTUS

Moscow

AUTO SHOW AVTOGRAND

Moscow

AUTOTRADE

Moscow

AVTOMASJA

St. Petersburg

AVTOFRAMOS

Moscow

AUTOCENTRE ATLANT – M

Moscow

AUTOEXPERT

Moscow

AC SOUTH

Moscow

BRIDGESTONE

Moscow

BOCTOK-ABTO

St. Petersburg

BEPPA MOTOPC

Perm

ILARAVTO

Moscow

INCOM – CENTER

Moscow

KAMAZ

Naberezhnye Chelny

KM RUS

Moscow

KIA MOTORS RUS

Moscow

LADA-FORWARD

Rostov-on-Don

MEIJER

Moscow

MEIJER CARGO SERVICE

Moscow

MODUS

Novorossiysk
Moscow

MOTORARSENAL JV

Minsk

MUSA MOTORS

Moscow

PIRELLI TYRE RUSSIA

Moscow

PORSCHE RUSSLAND

Moscow

RMSAUTO

Moscow

ROLLS-ROYCE OF THE HOTEL UKRAINE

Moscow

SCANIA RUSSIA

Moscow

CITROEN

Samara

TRADE AND SERVICE CENTER UMAX

Chelyabinsk

TRADE MOTORS

Rostov-on-Don

KERGE AUTOCENTER - OFFICIAL REPRESENTATIVE OF VOLKSWAGEN

Chelyabinsk

AUTOCENTER ON STOLICHNAYA HIGHWAY

Kyiv

VOSTOK-AUTO

St. Petersburg

AUTO SALON POLYUS-DM OPEL AND CHEVROLET

Tyumen

BENTLEY

ARCHITECTS:

"REGENT STANDARD"

NAYADA PRODUCTS AT THE FACILITY:

NAYADA-TEMPO

TOTAL AREA:

200 m²

The showroom of the Bentley Company, specializing in sales of luxury cars, sports a wing-shaped structure, created with the use of NAYADA-Tempo partitions. This system, with add-on panels, combines features of a wall and a light box. The center of the partition has a plasma panel installed, "sunk" into one of the sections to create a single surface with the partition. Being a key corporate element within the showroom, the structure gives a look of dynamics, of flight. The glasspartition is illuminated from within, and at night, within the show room, making up a transparent cube, it becomes the main detail of the interior, which can be seen even from the outside, through the transparent walls of the building.





ROLLS-ROYCE

ARCHITECTS:

SENAB PROJECT

NAYADA PRODUCTS AT THE FACILITY:

NAYADA-CRYSTAL
NAYADA-PARAPETTO
CRYSTAL DOORS

TOTAL AREA:

600 m²

Rolls-Royce Dealership Company in Russia turned to the services of NAYADA Company to decorate its sales center.

NAYADA-Crystal partitions were used to decorate the showroom. The all-glass wall has expanded the prospective view, setting the tone of the interior. NAYADA-Parapetto special fences have been mounted onto glass panels, to ensure safety. The rest of

the atrium area is divided into zones with no-joint and no-section glass fences, on the basis of the unique NAYADA clamp profile.

The staircase fences also feature NAYADA-Parapetto, but with point-fixed side-located mountings. Absence of any supporting sections gives a feel of a light system and conceptually supports the idea of the project, providing a feel of openness and spaciousness.





JAGUAR & LAND ROVER RUSSIA COMPANY REPRESENTATIVE OFFICE

ARCHITECTS:

A.SHUTOVA

NAYADA PRODUCTS AT THE FACILITY:

NAYADA-HUFCOR
NAYADA-CRYSTAL
NAYADA-FIREPROOF

TOTAL AREA:

2000 m²
TOTAL AREA OF THE PARTITIONS INSTALLABLE: 600 m²

The space within the J L R Company representative office was divided into separate areas with all-glass NAYADA-Crystal partitions. A wide range of accessories helps NAYADA-Crystal partitions fit into the latest modern interior designs, giving a feel of weightless and light structures, thanks to the complete absence of frames and profiles.

The conference hall features movable NAYADA-Hufcor Partitions, enabling the room to be used to its full capacity, dividing it as needed.



BANKS



CREDIT SWISS BANK

Almaty

HSBC BANK

Almaty
Moscow

ALFA-BANK

Moscow
Tyumen
Minsk

BALTIC BANK

St. Petersburg
Vladivostok

BANK OF MOSCOW

Moscow
Minsk
Tyumen
Chelyabinsk

BANK OF ST. PETERSBURG

St. Petersburg

«BANQUE SOCIETE GENERALE VOSTOK»

Moscow
Kazan
Krasnodar

BARCLAYS BANK

Moscow

BROKERCREDITSERVICE

Kazan
Volgograd
Tyumen
Surgut
Omsk

VNESHPROMBANK

Moscow
Chelyabinsk
Vladivostok

REVIVAL

Moscow
Krasnodar

ORIENT EXPRESS BANK

Kazan
Nizhnekamsk
Krasnoyarsk
Vologda
Moscow
Ekaterinburg
Revda
Tyumen
Surgut

VTB

Penza
Belgorod
Almaty
St. Petersburg

VTB 24

Moscow
St. Petersburg
Tyumen
Krasnodar
Vologda
Cherepovets

GAZPROMBANK

Almetyevsk
Tyumen
Khanty-Mansiysk
Kazan

Krasnoyarsk

GAZSTROYBANK

Moscow

GAZENERGOPROMBANK

Moscow

BANK GUARANTEE

Moscow

GLOBEXBANK

St. Petersburg

CITY MORTGAGE BANK

Chelyabinsk
Moscow

GUTA BANK

Penza
Deltabank
Moscow

DEUTSCHE BANK

Moscow
St. Petersburg
Almaty

EUROPEAN TRUST BANK

Kirov
Eurofinance
Moscow

ZAPSIBCOMBANK

Tyumen
Pyt-Yah
Dzerzhinsk
New Urengoy

ZENITH BANK

Moscow

INTERPROMBANK

Moscow

KIT FINANCE 102

Moscow

ROYAL BANK OF SCOTLAND

Moscow

CREDIT EUROPE BANK

Moscow

KREDITURALBANK

Magnitogorsk

LEFKOBANK

Moscow

LOKO-BANK

Moscow

MAKPROMBANK

Moscow

MDM BANK

Moscow
Chita

MOSCOW BANK FOR RECONSTRUCTION AND DEVELOPMENT

Moscow
St. Petersburg
Kirov

SME BANK

Moscow

NORVIK BANK

Moscow

NORDEA BANK

Moscow

OTKRITIE

Moscow
Kazan

PROMSVYAZBANK

Volgograd
Vologda
Moscow

RAIFFEISENBANK

Moscow
St. Petersburg
Vladivostok
Tyumen
Kazan
Kiev
Krasnoyarsk
Chita
Bryansk

ROSBANK

Moscow
Krasnodar
Cheboksary
Kostroma
St. Petersburg
Ulyanovsk
Tyumen

OMSK REGION

Surgut
Tobolsk
Nizhnevartovsk
Nizhny Novgorod
Yaroslavl
Dzerzhinsk
Kstovo
Uren

CITIBANK

Krasnoyarsk
Norilsk
Irkutsk
Ulan-Ude
Kyzyl

SKB BANK

Abakan
Vladivostok
Chita
Tyumen

SB BANK

Petropavlovsk-Kamchatsky
Bryansk

SUMITOMO MITSUI RUS BANK

Moscow
Penza
Kaluga
Belgorod
Izhevsk
Sarapul
Votkinsk
Perm
Krasnokamsk
Komsomolsk-on-Amur
Kirov

ROSENERGOBANK

Moscow

RUSSIAN STANDARD

Krasnoyarsk
Chelyabinsk
Chita

RUSSOBANK

Moscow

RUSBANK

Moscow

RENAISSANCE CAPITAL

Kiev

SBERBANK 88

Moscow 94
Ekaterinburg

Almaty 100

Gomel
Tyumen
Omsk
Surgut
Berezovo
New Urengoy
Kazan
Krasnoyarsk
Irkutsk
Chelyabinsk
Minsk
St. Petersburg
Arkhangelsk
Severodvinsk
Kirov
Cherepovets
Vologda

FALCON

Velsk
Vladivostok
Gd Volochek
Tambov
Kaluga
Izhevsk
Chita

THE UNIVERSITY OF SBERBANK 96

Odintsovo

BANK CONNECTED

Moscow

CITIBANK

Moscow
St. Petersburg
Almaty

CHEREPOVETS

Cherepovets
Tyumen

SB BANK

Moscow
Sumitomo Mitsui Rus Bank

URALSIB

Moscow
Tyumen
Chelyabinsk
Bryansk
Kirov
Khanty-Mansiysk
Tyumen
Tobolsk

HOME CREDIT

Moscow
Cherepovets
Krasnoyarsk
Irkutsk
Ulan-Ude
Abakan
Minsk

UNICREDIT BANK

Sochi
Moscow

BARING VOSTOK CAPITAL PARTNERS 104

Moscow

MICEX 108

Moscow



SBERBANK OF RUSSIA / MOSCOW

ARCHITECTS:

DANIEL BABIUCHUK
MILOVANOSKI ALEXANDER DECMOS

NAYADA PRODUCTS AT THE FACILITY:

NAYADA-CRYSTAL
NAYADA-FIREPROOF EI-60

TOTAL AREA:

30 000 m²
TOTAL AREA OF THE PARTITIONS INSTALLABLE: 2213 m²

Renovations of the offices of Sberbank of Russia, the leading financial institution within the RF and CIS, were carried out due to the need to expand the number of working places by 30%, enable the concentration of major subdivisions within the main office, and improvement of quality of communications.

To achieve these objectives, an open space concept was developed, while at the same time enhancing natural lighting and air quality characteristics. Flexibility and adaptability of NAYADA-Standard office partitions and NAYADA-Crystal glass partition systems, fitting well into any interior, provided architects with excellent opportunities to address these objectives.





THE UNIVERSITY OF SBERBANK OF RUSSIA IN CITY OF ODINTSOVO

ARCHITECTS:

D.ARTMAN
KH.APAIDYN
D.EKIZ

NAYADA PRODUCTS AT THE FACILITY:

NAYADA-REGINA LITE
NAYADA-REGINA LINE

NAYADA-HUFCOR
NAYADA-DOORS

TOTAL AREA:

12 000 m²
AREA OF THE PARTITIONS INSTALLED: 2825 m²

The offices of Sberbank of Russia combine modern construction technologies, ecology-friendly focus, multi-functionality and aesthetics.

The core of the building is a 16-meter atrium, clad in NAYADA-Regina Line panels. The curve-line complex panels, clad in veneer, were installed at great height, within an extremely short period of time – just three weeks.

Employment of various patterns of valuable woods, gives a combination of light tones with dark edges, highlight the respectability and compose the elegance of the interior.

The Sberbank Corporate University occupies five floors in the building. Employment of NAYADA-Hufcor partitions enables the utilization of the available space to the utmost, quickly and easily transforming large

halls into detached lecture halls, if the need arises. Now 42 classrooms can host up to 900 students.







SBERBANK OF RUSSIA / ALMATY

ARCHITECTS:

VALENT ARCHITECTURAL BUREAU

NAYADA PRODUCTS AT THE FACILITY:

NAYADA-CRYSTAL
NAYADA-STANDART
NAYADA-DOORS

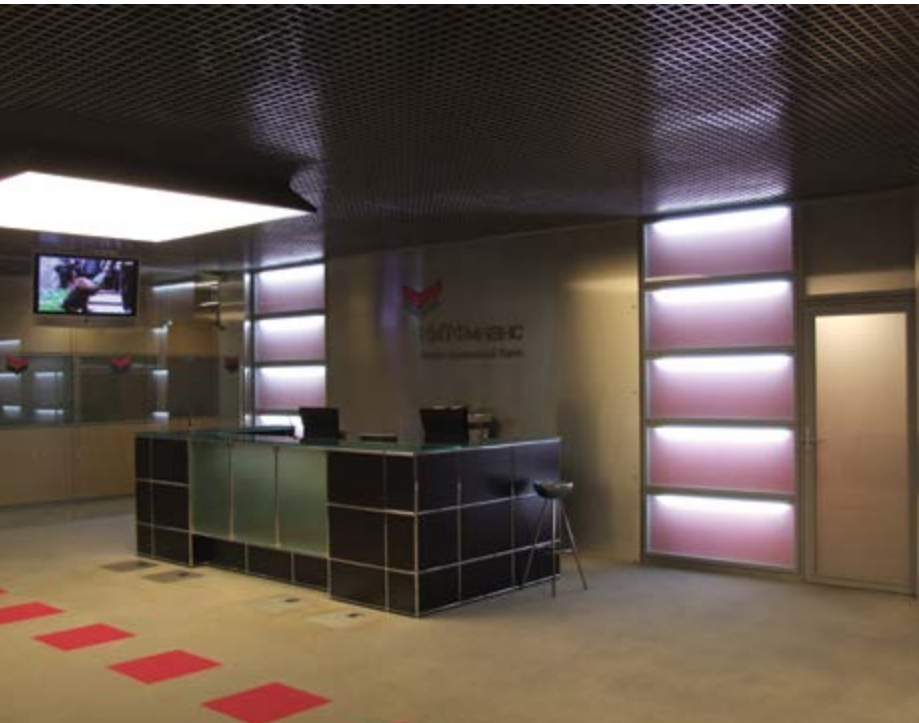
The interiors of the Almaty Sberbank Office, located in the largest city of Kazakhstan, had to meet a number of requirements, among which were lightness, transparency, as well as follow the color stylistics of the brand.

The routes for bank visitors needed to be thought through and arranged.

NAYADA-Standart and NAYADA-Crystal partitions, with glass surfaces installed, turned out to be an optimal solution for these offices.

While giving a look of fragile and light structures, these partitions and materials are nevertheless extremely firm, reliable and safe.





KIT FINANS

NAYADA PRODUCTS AT THE FACILITY:

NAYADA-Tempo in veneer

TOTAL AREA:

600 m²

In an effort to emphasize the importance and magnitude of the company, the architect chose strict and even some cold motifs, implementing the project in a High Tech style. To create an emotional and rational compromise in the interior decorations, it was decided to add a bit of «warmth» and grace, finishing the walls of the reception area and lounge in bleached oak veneer.

The warm tones and naturalness of wood, as well as the reliability and durability that are associated with oak, combined with metal and glass panels, were able to create harmony between the financial performance of the business, requiring cold calculations, and the company's customer focus.



BARING VOSTOK CAPITAL PARTNERS

THE GRAND PRIX



ARCHITECTS:

PAVEL POLIKARPOV ARCHITECTS LTD

NAYADA PRODUCTS AT THE FACILITY:

NYADA-TWIN
NAYADA-MAGIC (NAYADA-DOORS)

TOTAL AREA:

2500 m²

The interior of the new office of the international investment company Baring Vostok Capital Partners is designed with NAYADA transparent glass partitions, which contributes to the efficient interaction of employees and their productive work.

Areas for work, meetings and negotiations are singled out in a separate block. Small offices are made of NAYADA-Twin and NAYADA-Standart glass partitions.

The black color, in Sahara Black profiles, emphasizes the conciseness of the interior. The black contours visually divide the open space into separate working groups. Glazing with the help of the NAYADA-Twin system allowed for providing an additional degree of sound insulation in the rooms.

A new design of the NAYADA Company, the Magic Door, is installed in the openings of partitions. The

door has a high degree of sound insulation, which is ensured by the double contour seal and quiet operation, thanks to the use of magnetic locks and hidden hinges that are exceptionally reliable and durable.







MICEX

ARCHITECTS:

«LINE ARCHITECTS» LLC

NAYADA PRODUCTS AT THE FACILITY:

NAYADA-HUFCOR
NAYADA-TWIN
NAYADA-FIREPROOF

TOTAL AREA:

14,000 m²

NAYADA Company's products have graced one of the largest stock exchanges in the CIS and Eastern Europe – The Moscow Interbank Currency Exchange.

For this large-scale project, we used several models in our product range. Thanks to these, we were able to achieve the best aesthetics, practicality and safety in the modernization of the exchange's workspaces.

For MICEX we also installed double-glazed NAYADA-Twin partitions, which ensure additional sound insulation.





SPLENDID OFFICES OF OTHER SPLENDID COMPANIES



ALCOHOL SIBERIAN GROUP 150	SCHLUMBERGER	FAR MORTGAGE CENTER	Moscow
Moscow	Almaty	Vladivostok	STOCKMANN
BON JOLI	Krasnoyarsk	DBM-INVEST	Kazan
Kazan	SHELL	Chelyabinsk	STROYSITI
TAIF	Almaty	DELOITTE	Chelyabinsk
Kazan	SVL ACTIV TRADING LIMITED	Ufa	CTC
CORSTON	Moscow	DC «CHELYABINSK-CITY»	Krasnoyarsk
Kazan	GIDE LOYRETTE NOUËL 124	Chelyabinsk	TELEKONTAKT
PRICEWATERHOUSE 164	Moscow	JOHNSON AND JOHNSON 158	Tver
Kazan	WHITE & CASE	Moscow	TELENEDELYA
BAKER HUGES	Almaty	EUROOPT	Krasnoyarsk
Almaty	XENON 142	Minsk	TRADING COMPANY «PYRAMID»
BAKER & MCKENZIE	Moscow	EMPIRE PHARMA	Chelyabinsk
Almaty	AKRON 156	Kiev	CHAMBER OF COMMERCE
BRITISH AMERICAN TOBACCO	Moscow	Ekaterinburg	Bryansk
Vladivostok	AMBASSADOR	INTER RAO UES	TRADING HOUSE «URA-CRANE»
CHEVRON	St. Petersburg	Moscow	Chelyabinsk
Almaty	«CARAT» AIRLINE	INCOM-REAL ESTATE	TRANSNEFT
CLEVER	Chelyabinsk	Moscow	Krasnoyarsk
Moscow	ARENA LVIV	CALZEDONIA 126	TC «PRINCE PLAZA»
CASTROL 170	Kiev	Moscow	Moscow
Moscow	ALBION	COCA-COLA	Upper Pyshma
DARLIS	Moscow	Chelyabinsk	UNR-47
Moscow	ASCON-CHELYABINSK	KREMLIN, THE OFFICE OF THE PRESIDENT	Petrozavodsk
DHL	Chelyabinsk	Kazan	URALAVTOSTEKLO
Almaty	ASTRAZENECA	Chelyabinsk	Chelyabinsk
EASTWARD CAPITAL 144	Moscow	MCKINSEY	URALCABLE
Moscow	ATON	Moscow	Ekaterinburg
ERNST & YOUNG	Moscow	MOSCOW OFFICE 154	Moscow
Almaty	Krasnoyarsk	MIAN	Chelyabinsk
St. Petersburg	AFIMALL CITY 166	Kazan	USSURNEFTEPRODUKT
DELOITTE	Moscow	COMMERCIAL SEA PORT	Vladivostok
Almaty	BACARDI	Vladivostok	FBU «CADASTRAL CHAMBER» OF THE
ENGLISH FIRST	Novosibirsk	MOE	PRIMORSKY
Moscow	Ekaterinburg	Vologda	Vladivostok
St. Petersburg	Rostov	NAFTOGAZ	Ozersk
GRUPON	Minsk	Moscow	FSUE «LIGHHOUSE»
Moscow	BELARUSSIAN OIL COMPANY	NEARMEDIC 122	FSUE ROSTEHINVENTARIZATSIYA FE ERAL BTI
GIDE LOYRETTE NOUËL 128	Moscow	Moscow	Vladivostok
Moscow	BUSINESS CENTER «BUSINESS WORLD»	NYCOMED 132	FELIX JV
GUNVOR 172	Chita	Moscow	St. Petersburg
Moscow	BUSINESS PARK «GREENWOOD»	Ekaterinburg	Minsk
GSL LAW & CONSULTING 138	Moscow	NASTA	FINANCE-MANAGEMENT GROUP
Moscow	BUSINESS HALL «BOVID»	Moscow	Moscow
GOLDEN MILE FITNESS & SPA 168	Chelyabinsk	NSK «OLYMPIC»	St. Petersburg
Mytishi	Bryansk	Kiev	Krasnoyarsk
HENDERSON	BUSINESS CENTER «TRIUMPH»	NTV 176	FEDERAL GRID COMPANY (FGC COM PANY)
Moscow	Bryansk	Moscow	Ekaterinburg
INEWS	Kiev	NEW MEDIA	FASHION CENTER «AXION»
Moscow	BC «MILLENIUM»	Moscow	Ekaterinburg
IZHORASTALINVEST	Moscow	PEPSI-COLA	«TAXATION AND FINANCE LAW» CENTER OF
Moscow	BC «VICTORY PARK»	Moscow	ECONOMIC EXPERTISE
KIMBERLY CLARK	Moscow	PRICEWATERHOUSE	Ekaterinburg
Almaty	DESK - TECHNOLOGY	Kazan	ZURICH
LG	Chelyabinsk	PRISCO	Kazan
Moscow	VITALYUR ODO	Vladivostok	CHELYABINSK AIRLINES
Vladivostok	Minsk	PROMSVYAZNEDVIZHIMOST 166	Chelyabinsk
L'OREAL	VODOKANAL	Moscow	CHPKTI
Moscow	St. Petersburg	«PULKOVO» AIRPORT	Chelyabinsk
LUFTHANSA	AROUND THE WORLD PUBLISHER	St. Petersburg	VERONESI AND PARTNERS 180
Almaty	Moscow	EDITION OF THE NEWSPAPER «EVENING	Verona
NESTLE	GAZPROM	MOSCOW»	AKIN GUMP STRAUSS HAUER & FELD LLP
Almaty	Moscow	Moscow	Moscow
OC S	GAZPROMNEFT	ROSTATOM	FESCO 174
Krasnoyarsk	Krasnoyarsk	Moscow	Moscow
PIRELLI TYRE	GARANT CHRYSOSTOM	ROSNEFT-ENERGY	ECO MOM
Moscow	Chelyabinsk	Krasnoyarsk	Moscow
PROCTER & GAMBLE	GORVODOKANAL	PPT AUTOHOLDING	«ECONOMICS» PUBLISHER
Almaty	Vladivostok	St. Petersburg	Moscow
EKATERINBURG	GAZOIL CITY 132	SLAVNEFT	ELECTRO-CHELYABGORTANS
St. Petersburg	Moscow	Krasnoyarsk	Chelyabinsk
RIO TINTO	HOTEL	SPORTMASTER	WHITE STONE BC 134
Almaty	St. Petersburg	Tver	Moscow
SPEECH	GROUP «ABSOLUTE»	S.T.I. DENT 114	
Moscow	Moscow		
E4 GROUP	E4 GROUP		
Moscow	Moscow		



S.T.I. DENT

ARCHITECTS:

TOPDOM LLC

NAYADA PRODUCTS AT THE FACILITY:

NAYADA-TWIN
NAYADA-REGINA
FURNITURE

TOTAL AREA:

800 m²

S.T.I. Dent, a reputable dental products supplier, ordered exclusive decorations for its Moscow-based offices. To implement the idea, TopDom Architectural Bureau, which acted as the general contractor in the project, sought assistance from NAYADA. The S.T.I. Dent offices became a true proving ground for the realization of innovative ideas and implementation of creatively different solutions.

The main materials used in this project were glass and wood veneer. These were used in the decoration of doors, walls, and ceilings, as well as in the

manufacturing of furniture and the reception stand. Furniture for administrators and personnel was manufactured, especially for this project, by the Lepota Designer Furniture Factory. Using the customer's sketches, this NAYADA production facility created meeting-room tables and panel cabinet sets with area lighting, which became additional decorative elements. The successful combination of materials and the techniques applied in manufacturing of various items, allowed us to achieve full compliance with ideas of the innovative designer. One of the interesting solutions

implemented was carbon for coating objects of the interior. The "wave" became one of the brightest and most important facing elements, selected to implement the main solutions of the project. This was widely used in the decoration of panels and picturesque elements of furniture. In particular, NAYADA production specialists offered an interesting interpretation of the "wave" in wood veneer, using innovative materials processing technologies.











NEARMEDIC PLUS LLC

NAYADA PRODUCTS AT THE FACILITY:

- NAYADA-STANDART
- NAYADA-OPTIMA +
- NAYADA-HUFCOR
- NAYADA-CRYSTAL
- NAYADA-REGINA

TOTAL AREA:

1600 m²
AREA OF PARTITIONS: 1000 m²

This Russian pharmaceutical, biotech and medical company has created 100 comfortable and ergonomic workplaces for its employees.

An excellent addition to these workplaces is the additional ability to rapidly create meeting areas, which, if necessary, can be easily converted into a spacious conference room. This is made possible by the ultra-transformable NAYADA-Hufcor partitions.

When creating comfort, practicality and aesthetics in modernizing these offices, all safety requirements were taken into account, including the provision of fire-resistant Regina veneered doors.

Providing the finishing touches to this large-scale project were the general constructions works, including the custom artistic painting of the walls and installation of multi-level plasterboard ceilings.





GIDE LOYRETTE NOUËL

ARCHITECTS:

SERGEY ESTRIN
JULIA SHEREMETYEVA

NAYADA PRODUCTS AT THE FACILITY:

NAYADA-CRYSTAL
NAYADA-HUFCOR
NAYADA-RECEPTION
NAYADA-REGINA

NAYADA-REGINA LINE
NAYADA-DOORS МЕБЕЛЬ
ЛЕПОТА

TOTAL AREA:

1400 M2

The Moscow offices of Gide Loyrette Nouel, an international law firm with a history going back more than 100-years, have been decorated with the use of NAYADA-Standard and NAYADA-Crystal partitions, as well as six NAYADA-Reception stands, clad in natural veneer.

The focus is on the six reception areas, which have various shapes and are accompanied by exclusive drawer units and cabinets, specially produced by

NAYADA for this project.

Furniture, in addition to its direct purposes, is successfully employed to hide complex features of the building, transforming columns and niches into useful space. NAYADA-Crystal has been used to decorate the reception area.

The all-glass partition has a white panel installed (thickness – 20 cm, length – 9 m), and seems to be flying in the air, when looked at from a particular angle.





CALZEDONIA

ARCHITECTS:

NIGRI STUDIO

NAYADA PRODUCTS AT THE FACILITY:

NAYADA-HUFCOR
NAYADA-CRYSTAL

NAYADA-REGINA
FURNITURE

TOTAL AREA:

2,000 m²
PRODUCTION AREA AT THE FACILITY: 900 m²

An innovative design solution for the new offices of Calzedonia in the Moscow-City Moscow International Business Center was offered by the NAYADA Company in collaboration with the renowned Italian architect Nicolo Nigri. Italian style and high quality products of NAYADA were implemented, using expensive natural materials.

The basic material used was wood veneer. The boundaries of the office in the "mirror tower" have

been organically decorated with brand name NAYADA-Crystal glass partitions. The office, created with a subtle sense of Italian style, was fitted with suitable NAYADA doors and partitions, created specifically for this project, using bleached CLEARVISION glass.

Especially for the offices of Calzedonia, designers from NAYADA-Regina, in collaboration with the Italian architect, designed a new doorframe, achieving an integrated level of glass and profile. Thanks to these

design solutions and production techniques, the designers managed to improve not only the sound insulation levels, but also the aesthetic aspect of the premises.

Sliding partitions, produced by NAYADA-Hufcor, were installed in staff training rooms and the cafeteria. NAYADA-Hufcor partitions, in selected areas of the office, provide for the operational division of premises into several zones.







GAZOIL CITY

ARCHITECTS:

JAUZA-PROJECT

Gazoil City Business Center, located in an eponymous residential complex with a well-developed infrastructure, has been decorated with several kinds of NAYADA systems. The main products used were the NAYADA-Standart basic fixed partitions. These general-purpose partitions, made with the use of flameproof fabric-covered panels, were used to decorate more than 12,000 sq. m. of floor space, and supplemented with three hundred laminated doors.

NAYADA PRODUCTS AT THE FACILITY:

NAYADA-STANDART
WITH FABRIC PANELS
NAYADA-HUFCOR

NAYADA-INTERO
DOORS

Another popular partition system, the NAYADA-Intero, was also used in decorating the business center. In the course of the installation work, we offered our Russian customer to use built-in inter-glass automatic rolls. These serve to emphasize the advantages of the Interio system, namely its visual lightness and high acoustic isolation. For partitions, we selected 30 veneered doors, more than 200 laminated doors, designed for the nonstandard-width doorways, as well as NAYADA-



TOTAL AREA:

TOTAL AREA OF PREMISES: 30,000 m²
PRODUCTION AREA AT THE FACILITY: 15,000 m²

Twin doors in a polished structural profile. Some of the arranged spaces were decorated using NAYADA-Hufcor transformable semi-automatic partitions.





WHITE STONE BC (FORMERLY THE LESNAYA PLAZA BC)

ARCHITECTS:

AEDAS ARCHITECTS

NAYADA PRODUCTS AT THE FACILITY:

NAYADA-TWIN
NAYADA-REGINA
NAYADA-CRYSTAL

NAYADA-DOORS
NAYADA-PARAPETTO
NAYADA-FIREPROOF

TOTAL AREA:

49 500 m²

Originally, the entrance zone was divided into three different sized areas, with no pronounced functionality. In their place, the architects created a reception zone, an elevator lobby, and a recreation zone.

Specifically for this project, NAYADA specialists developed complex three-dimensional milled doors. Embedded in the doorways are hidden closers, drop-down thresholds, and access control systems

with electromagnetic locks.

The conceptual center of the recreational area became the rectangular fountain walkway, aligned at the same level as the floor. A special fountain decoration is the transparent wall waterfall from NAYADA.

In the recreational zone, the architects created an informal and relaxed atmosphere. Installed along the perimeter are NAYADA-Twin doors with a black matte color profiles. The glass has intricate designs created

by laser engraving. Each glass section is highlighted using hidden LED lighting. Control of the lighting (brightness, flicker) is performed via a remote control.





GSL

NAYADA PRODUCTS AT THE FACILITY:

NAYADA-CRYSTAL
NAYADA-HUFCOR
ДВЕРИ CRYSTAL

TOTAL AREA:

1400 m²

The GSL offices, providing tax-related services, are built around the contrast of round and straight shapes. Combined partitions are of unique design, with no straight lines between solid and transparent parts. The project designer used drywall office partitions and an original large screen in the shape of an incomplete circle with a NAYADA-Crystal partition within.

Point-fixed mounting of the all-glass partition, within the opening, gives the interior a highly aesthetic look, while enabling an easy replacement of the glass, if needed.

The training room has a NAYADA-Hufcor partition, which is veneered on one side and covered with special plastics on the other, used as a white board during trainings – a very convenient solution.







XENON CAPITAL PARTNERS

ARCHITECTS:

MOSSINEPARTNERS

NAYADA PRODUCTS AT THE FACILITY:

NAYADA-CRYSTAL

TOTAL AREA:

2825 m²
AREA OF THE PARTITIONS INSTALLED: 430 m²



The interiors of offices of the Xenon Capital Partners, a leading financial company in the Russian energy sector, replicated the structure of a plant cell, which has a protected core and permeable “organoids” – meeting rooms and offices.

The meeting room islands, which one notices immediately upon entering the office, give a look of lightness and transparency, thanks to the use of

NAYADA-Crystal partitions. None of the partitions have straight angles, and are produced with the use of curved glass.

Transparent walls have such whimsy shapes, that one partition has several radiuses combined in it. At the same time, all panels continue each other with smoothness, making up a single line.

The radial system within the office is also formed by curved-glass doors.

Taking into account the unusual height of the partition – 3.2 meters, all curved-glass panels have been produced with the use of individual shapes.





EASTWARD-CAPITAL

NAYADA PRODUCTS AT THE FACILITY:

NAYADA-CRYSTAL
NAYADA-STANDART
NAYADA-DOORS

TOTAL AREA:

3500 m²

Eastward Capital Group of Companies, "Glavleasing" and "Torgovy Kvartal" occupy the top two floors of the "North Tower" of the Moscow-City Complex. The offices maintain a single corporate style in their working areas, while every representative area features a unique decor style.

The facade area has been completely covered in glass panels. The internal office area is built around two

square-shaped atriums, circling the elevator hall. All office premises are built around these.

NAYADA-Crystal and NAYADA-Standart partitions have not only become an indispensable part of the interior of EASTWARD Capital Group, but also provide high soundproofing characteristics.





NASTA (ZURICH INSURANCE GROUP)

ARCHITECTS:

B. BUYNOVSKY

NAYADA PRODUCTS AT THE FACILITY:

NAYADA-CRYSTAL
NAYADA-STANDART
NAYADA-REGINA LINE

NAYADA-PARAPETTO

TOTAL AREA:

5000 m²

Offices of the Nasta Company (Zurich Insurance Group) have a unique feel of warm and harmonized space, thanks to a clever combination of wood and glass patterns.

Even the ceiling has been clad in glass and veneer, giving it a unique look of a design masterpiece. The idea to employ a veneer-clad ceiling surface, with sections of illuminated glass, turned out to be a brilliant

solution, both literally and figuratively. This ceiling ensemble endows the office with a look of style, technological prowess and warmth.

Partitions, doors and walls are in sync with the tone and style within the premises, decorated with NAYADA systems. A unique, transparent and deep interior is built up by the combination of solid walls, clad in NAYADA-Regina Line, and all-glass NAYADA-Crystal.







ALCOHOL SIBERIAN GROUP

ARCHITECTS:

UNK PROJECT

NAYADA PRODUCTS AT THE FACILITY:

NAYADA-CRYSTAL
NAYADA-DOORS
NAYADA-HUFCOR

TOTAL AREA:

2 740 m²

The new office of the Alcohol Siberian Group (ASG), a Russian manufacturer of alcoholic beverages, is located on the 30th floor of the Empire Tower (MIBC Moscow-City).

The office has a large open space, which runs parallel to a block of meeting rooms and private offices of executives. NAYADA glass partitions and doors divide the premises into separate working areas. The design

concept unobtrusively reflects the values and products of the ASG. In the interior are images of nature – forests, lakes, meadows, which display the concepts of the company's brands.

The main conference room has the NAYADA-Hufcor retractable partition system, which allows transforming the premises into two separate meeting rooms, or creating a large common space for large meetings.

Cloth was used for finishing the walls of the conference room, thus increasing the acoustic comfort of the room.







MOSCOW OFFICE

NAYADA PRODUCTS AT THE FACILITY:

NAYADA-TWIN
NAYADA-REGINA
NAYADA-DOORS

TOTAL AREA:

90 m²

The main materials used in this project were natural veneer, glass, and leather. They were used to decorate all areas of the office. The office of the chief executive is decorated with NAYADA-Regina wall panels made of Makassar veneer.

The NAYADA-Regina door has sound insulation of 42 dB. The inner side of the private office door is made of Makassar veneer and the outer side of the door panel

matches the 3D designs in the reception area, which makes it practically invisible in the interior.

Complex 3D raised panels, manufactured at the LEPOTA Design Furniture Factory, were mounted over the entire height of the walls. The panels are the same from floor to ceiling, with only vertical joints being barely noticeable.

The meeting rooms are located in a separate area, detached from the rest of the office space by NAYADA-Twin double-glazed partitions. NAYADA-Magic doors enhance the acoustic properties of these partitions.





AKRON

ARCHITECTS:

LINE ARCHITECTS

NAYADA PRODUCTS AT THE FACILITY:

NAYADA-CRYSTAL
NAYADA-STANDART
NAYADA-REGINA LINE

NAYADA-PARAPETTO

TOTAL AREA:

4000 m²
AREA OF THE PARTITIONS INSTALLED: 600 m²

The interior concept of the Akron Group office, a leading international fertilizers producer, is based on ideas of a democratic office, arranged within one large room without any main partition walls.

Movable and fixed NAYADA-Crystal and NAYADA-Fire-proof partitions were used to arrange the office structure and designate functional areas. This office area arrangement concept is in sync with cutting-edge

management formats, enabling new internal coordination and communication systems to be effectively implemented.



JOHNSON & JOHNSON

ARCHITECTS:

SERGEY ESTRIN ARCHITECTURAL STUDIO

NAYADA took part in decorating the Professional Training Center with Johnson & Johnson.

All-glass NAYADA-Crystal systems help to smooth out the premises proportions, giving a look of wide spaces to narrow hall areas. The glass surfaces of the partitions are decorated with theme-based pictures of contact lenses.

NAYADA PRODUCTS AT THE FACILITY:

NAYADA-CRYSTAL
NAYADA-TEMPO
NAYADA-DOORS

NAYADA-FIREPROOF DOOR

Offices employ the NAYADA-Tempo system and are clad in gray laminate. The successfully employed tone is in harmony with glass and gives the look of a spacious place.

White high lacquered doors (with the height of 2,570 mm) give a look of high ceilings, with a focus on the upper part of the room.

TOTAL AREA:

350 m²

The Center's conference-hall, where many people gather at the same time, has a NAYADA-Fireproof door installed.





THE VISION CARE INSTITUTE OF JOHNSON & JOHNSON

ARCHITECTS:

SERGEY ESTRIN ARCHITECTURAL STUDIO

NAYADA PRODUCTS AT THE FACILITY:

NAYADA-REGINA
NAYADA-CRYSTAL
NAYADA-HUFCOR

NAYADA-DOORS
NAYADA-PARAPETTO

TOTAL AREA:

950 m²

The second vocational training center for specialists in the field of vision correction — The Vision Care Institute in Moscow — is the second project of NAYADA for the TVCI division.

The broken perimeter of the walls in the reception area creates complex and dissimilar lines of sight. The glowing glass inserts, installed by NAYADA from floor-to-ceiling between the walls planes, visually expand the narrow corridor. The height of each

structure reaches almost three meters.

The discreet monochrome interior contrasts with the faceted volume of copper walls and bright accents. Dubbing of walls from NAYADA is made using gray water-resistant panels. The interior is harmoniously enlivened by NAYADA white laminated doors. The opal film on the NAYADA-Crystal glass partitions and doors is made according to the architects' designs. The internal walls of the auditorium, used for

conferences and performances, are lined with

trapezoidal panels. Complex forms of wall panels were made at NAYADA's own production facilities. LED light strips are mounted at the ends. The walls with geometric patterns, tables with beveled bases and triangular lights, all form a very dynamic space. NAYADA-Hufcor convertible partitions allow controlling the interior space of the auditorium.







PRICEWATERHOUSECOOPERS



ARCHITECTS:

MURRAY-O-LAIRE

NAYADA PRODUCTS AT THE FACILITY:

NAYADA-CRYSTAL
NAYADA-HUFCOR
NAYADA-DOORS

TOTAL AREA:

1700 m²

NAYADA was engaged in equipping the VIP-area in the offices of PricewaterhouseCoopers Company, the world's largest consulting and auditing network.

This office is unique in terms of ergonomics and design, and, what is most important, the very design contributes to creating effective business processes.

The hallways are decorated with all-glass NAYADA-Crystal partitions, ensuring natural lighting and thus enabling conservation of electricity.

The hall, designed for conferences and trainings, has two NAYADA-Hufcor systems in place, which divide the spacious conference hall into two or three detached rooms with excellent acoustic and soundproofing characteristics.



AFIMALL CITY

ARCHITECTS:

B&C ARCHITECT

NAYADA PRODUCTS AT THE FACILITY:

NAYADA-CRYSTAL
NAYADA-HUF COR

TOTAL AREA:

180 000 m²

Most of the retail premises within "AFIMALL CITY", the largest shopping and entertainment complex in the center of Moscow, are decorated with NAYADA products (over 90 stores).

Thanks to a transparent and light-weight look, all-glass fixed NAYADA-Crystal and movable NAYADA-Hufcor glass-wall partitions are not just walls, but virtually an ideal show room. NAYADA-Crystal partitions, closely

joined together without any sections, are light, but at the same time highly reliable and safe.



GOLDEN MILE FITNESS & SPA

ARCHITECTS:

STUDIO D73

NAYADA PRODUCTS AT THE FACILITY:

NAYADA-TWIN
NAYADA-CRYSTAL
NAYADA-DOORS

TOTAL AREA:

4 500 m²

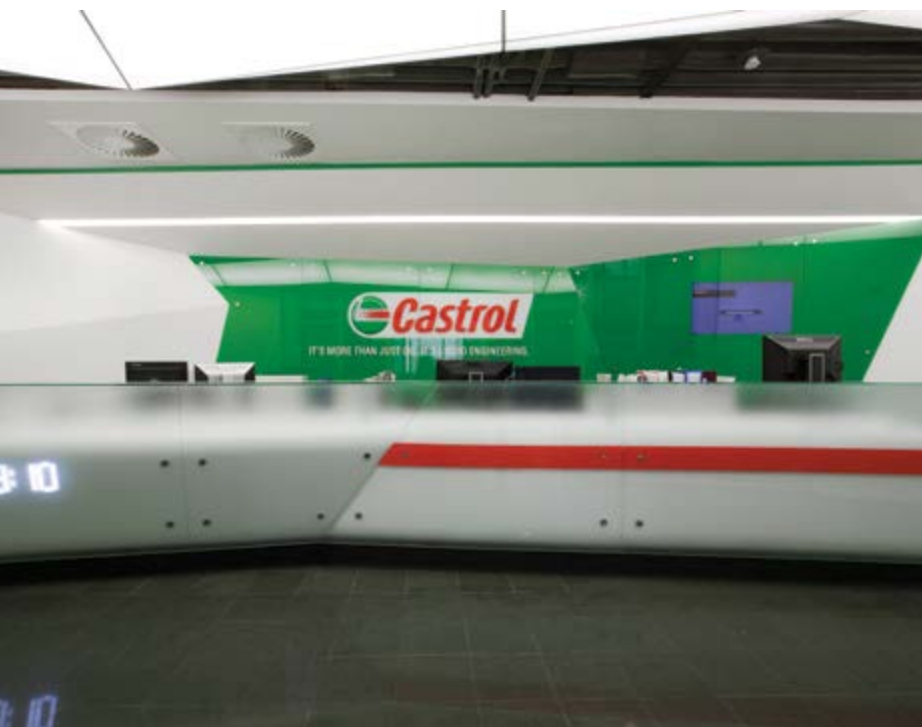
The complex is located on two floors of the Park Palace, a luxury residential complex. The club has a SPA and fitness areas, a water zone, beauty center, and even an oriental medicine center.

The health food restaurant space is divided by NAYADA-Crystal partitions. The glass was sandblasted using Italian stencils, repeating the patterned floral designs found on wallpaper coverings in the rest of the rooms of the center. On the glass doors and partitions, we applied gradient film, which ensures a

smooth transition from completely opaque coverings to completely transparent glass.

Spacious gyms, including the children's hall, were finished using NAYADA-Twin double-glazed partitions. This solution allowed us to achieve a high level of sound insulation.





CASTROL

ARCHITECTS:

ZA BOR ARCHITECTS

NAYADA PRODUCTS AT THE FACILITY:

NAYADA-CRYSTAL
NAYADA-DOORS
NAYADA-FIREPROOF

NAYADA-HUFCOR

TOTAL AREA:

2 025 m²

The Castrol Company, a leading British manufacturer of motor oils, is known for its strict corporate style; nevertheless, bright and expressive solutions were selected for their renovated Moscow office.

Za bor Architects managed to implement the company's slogan — "It's more than just oil. It's liquid engineering". However, the smoothness characteristics of liquid substances give way to polyline dynamic objects.

In order to implement the architects' ideas for frameless glazing of the meeting rooms and coffee stations, NAYADA installed the NAYADA-Crystal glass partitions without profiles. NAYADA-Fireproof fire-resistant partitions and doors were installed in the entrance area.

The logo at the front desk, designed by NAYADA, became the central decorative element. Branded prints of racetracks in the meeting rooms

emphasize the dynamism of the office. NAYADA-Hufcor sliding partitions were installed for their efficient use. When necessary, two rooms can be easily combined into one large space with an area of 54 square meters.



GUNVOR

ARCHITECTS:

CONCEPT ARD ARCHITECTURAL BUREAU

NAYADA PRODUCTS AT THE FACILITY:

NAYADA-STANDART
NAYADA-REGINA
NAYADA-HUFCOR

NAYADA-DOORS

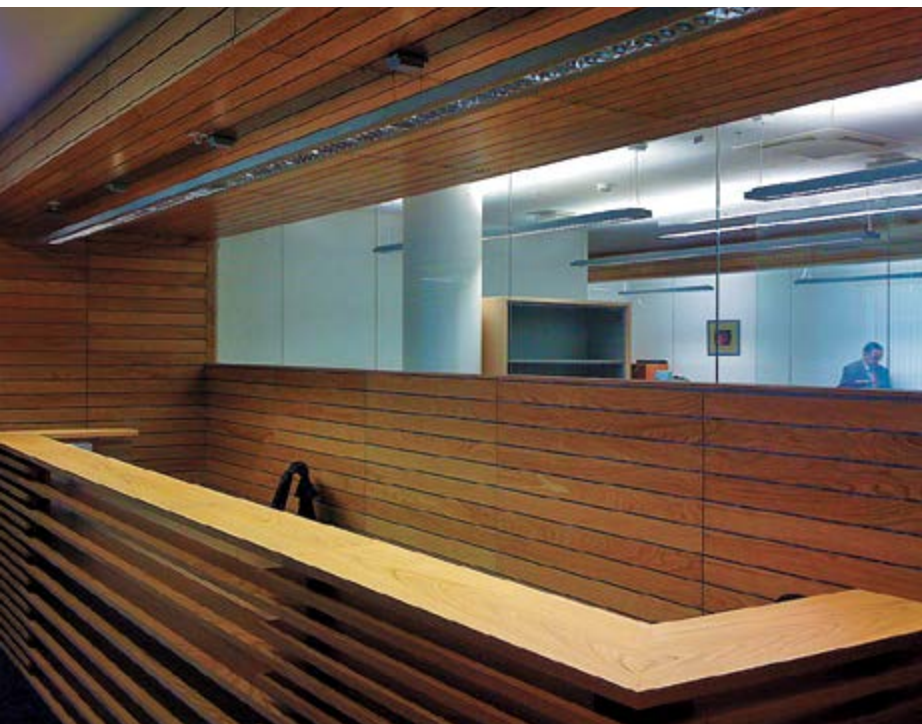
TOTAL AREA:

800 m²

The internal spaces within the offices of Gunvor, a major oil-refining company, have been built around the circle-shaped building architecture. NAYADA-Standart, NAYADA-Regina, and NAYADA-Hufcor enabled us to highlight the height inside the premises, open the stained-glass panes as much as possible with a focus on the view from the windows.

The unique feature of these offices is the meeting room for video conferences, which can be transformed in two separate rooms with the use of the movable NAYADA-Hufcor partitions.

The offices are separated from the hall by glass partitions, which provide for natural lighting, thus making it possible to conserve energy. A quiet, natural color scheme of veneer panels in the offices highlights the feeling of comfort and balance.



FESCO

ARCHITECTS:

SERGEY ESTRIN ARCHITECTURAL STUDIO

NAYADA PRODUCTS AT THE FACILITY:

NAYADA-CRYSTAL
NAYADA-REGINA

TOTAL AREA:

1000 m²

Innovative and technological features have been the main criteria for the office interiors of the FESCO Company, the country's leading transportation operator.

Offices and meeting areas are decorated using the NAYADA-Crystal system, with the clamping profile covered by the special veneered panels. This solution enabled us to abandon metal elements within the structure, giving a feel of harshness, while at the same

time providing a look of openness within the office, thanks to the abundance of glass panels.

Seeking to change the degree of openness within meeting areas, the so-called "smart" glass was employed, in order to provide the capability of changing the degree of transparency.

Seeking to detach working areas from the noise of the office, all-glass partitions were filled with soundproof triplex glass, providing the maximum degree of soundproofing characteristics – up to 32 dB.





NTV

ARCHITECTS:

T. LEVINA

NAYADA PRODUCTS AT THE FACILITY:

NAYADA-STANDART
NAYADA-CRYSTAL
NAYADA-HUFCOR H100

NAYADA-DOORS

TOTAL AREA:

7112,5 m²

NAYADA developed the interior design for the new eight-story office building of the NTV Television, a major Russian mass media company. The areas inside the offices were decorated with NAYADA-Crystal and NAYADA-Standart partitions, ensuring the required privacy and endowing the decor with openness and transparency through the use of louver shutters, installed within the partitions. Movable NAYADA-Hufcor would turn, in a blink of an eye, the spacious

conference hall into three detached meeting rooms with excellent soundproofing characteristics. The partition panels, clad in white laminated chipboard, are not only used as walls within the rooms, but can also be conveniently utilized as a screen for projection of images.





PROMSVYAZNEDVIZHIMOST

ARCHITECTS:

A. PETROV

NAYADA PRODUCTS AT THE FACILITY:

NAYADA-STANDART
NAYADA-HUFCOR
NAYADA-REGINA-LINE

NAYADA-OPTIMA+
NAYADA-INTERY
NAYADA-DOORS

TOTAL AREA:

2000 m²
AREA OF THE PARTITIONS INSTALLED: 1000 m²

The offices of Promsvyaznedvizhimost, a leading Russian company specializing in the field of real estate management, exploitation and development, is a poster child of NAYADA capabilities to employ any construction materials and structures, for example, stone.

NAYADA-Regina partitions were used to decorate the management offices, while the rest area was

decorated with veneer. Especially noteworthy is the ceiling surface, with the unique structure being mounted with four hidden spires, giving a look of a square panel, floating in the air.

NAYADA-Crystal partitions were used inside the meeting rooms, giving a look of individually standing glass cubes.





“VERONESI AND PARTNERS” / VERONA, ITALY

ARCHITECTS:

GMP ARCHITEKTEN VON GERKAN
MARG UND PARTNER

NAYADA PRODUCTS AT THE FACILITY:

NAYADA-STANDART
NAYADA-FIREPROOF
NAYADA-HUFCOR
NAYADA-PARAPETTO

TOTAL AREA:

168 800 m²

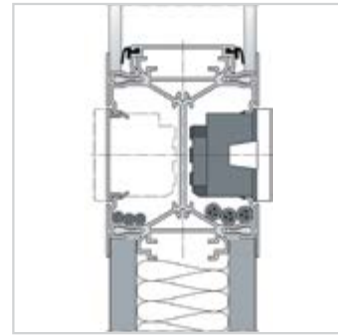
The offices of Veronesi and Partners Law Firm were divided with NAYADA partitions in order to create functional areas. The specific feature of these offices is scarcity of lighting, which required that internal partitions be as transparent as possible. Few solid Intero partitions are decorated with panels of white and wenge colors. White color of furniture, the reception stand, louver shutters installed within double-glass partition sections – all these elements highlight the

clean and transparent atmosphere within the office. The idea of the office design is “pulito”, an Italian concept, meaning “neat and pure” with “no frills”.

This style is in sync with the European market trends, and reflects Veronesi and Partners aspirations for achieving impartiality and candor in relations with their



PRODUCTS | FIXED PARTITIONS



NAYADA-STANDART

1. This system allows the installation of partition sections without the use of any special angle elements of up to 7%. Built-in inter-glass Venetian blinds may be installed.
2. This system features improved reliability, thanks to unique structural reinforcement of vertical posts that allow for arranging rooms without any fixing to walls and ceiling, and even without loadbearing elements.
3. This system provides for various options of cable ducts.

4. Partition thickness is 82 mm.



NAYADA-TWIN

1. This system is characterized by the double-glazing, which does not require any vertical profile loadbearing elements.
2. This system provides for non-profile wall connections.
3. All the door types produced by the Company may be installed in this system. A door with double sealing (for better sound insulation) also may be used. The door leaf thickness is equal to the partition thickness. The double structural glazing, hidden hinges and closers are provided for.

4. This system allows for the use of various types of sliding glass and solid doors.
5. This system includes unique height adjustment elements for glass leaves, ensuring the reliable interconnection of glass elements. The thickness is 82 mm; the sound insulation of glazed sections is up to 46 dB.

PRODUCTS | FIXED PARTITIONS



NAYADA-INTERO

The Intero system is notable for the panel-type fixing of all sections. The thickness is 114 mm; two basic glazing solutions are possible – with visible frame and a hidden profile system. Built-in roller solutions. Many angle elements including those with no angle.



NAYADA-REGINA

1. This system is characterized by the use of veneer in the decoration of both panels and main bearing elements, in case of the glazing.
2. Three main options for decorated elements: round elements, square elements and minimalist shapes, thanks to the direct veneering of aluminum elements.

PRODUCTS | FIXED PARTITIONS



NAYADA-CRYSTAL

1. Cristal clamping profiles are 55 mm and 100 mm high. The 55 mm profile matches Orman accessories perfectly, as the fittings are 52 mm high. The 100 mm high clamping profile is appropriate for the high passability and regular cleaning with cleaning machines.

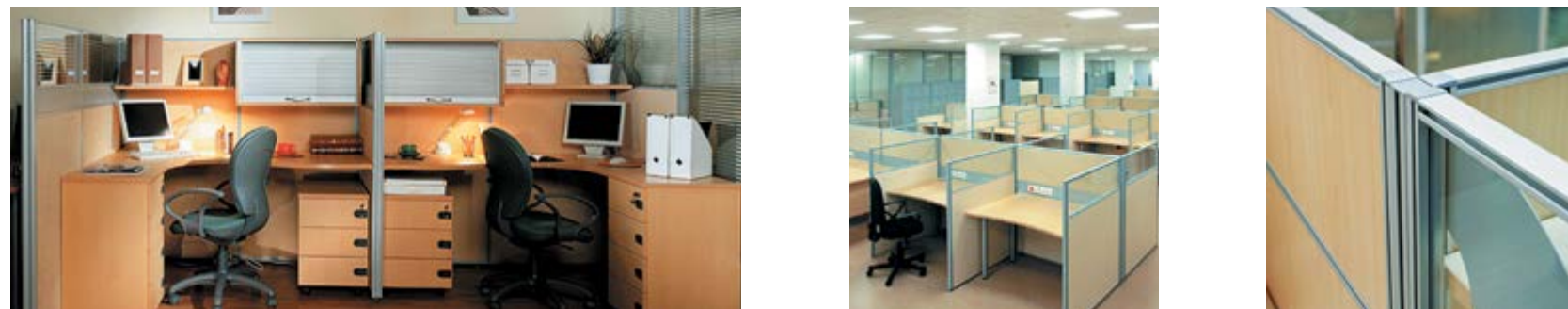
2. Two types of special inter-glass profiles – aluminum and polycarbonate – are used in NAYADA-Crystal partitions to improve the sound insulation. The application of an inter-glass profile ensures the partition sound insulation of 35 dB.

3. The NAYADA-Crystal system offers various options to use guide profiles of from 0 to 100 mm high. Construction of 100 mm high allows the use of guide profiles for electrical wiring.

4. This system provides for special doorframes, which make it possible to install all types of door leaves produced by the Company. All-purpose crimping frames for 40 mm leaves and crimping frames (2777) for all-glass leaves are available for NAYADA-Crystal partitions.

5. Curved transparent sections may be used.

PRODUCTS | MOBILE PARTITIONS



NAYADA-OPTIMA, NAYADA-BLITZ, NAYADA-UNO

1. The thickness is 58 mm for Optima partitions, 33 mm for Blitz partitions and 25 mm for the Uno system.

2. These systems allow using glazed modules, modules with fabric, laminate panels and combined modules.

3. The Optima partition system is equipped with a built-in cable duct and may include doors.

PRODUCTS | OPERABLE PARTITIONS



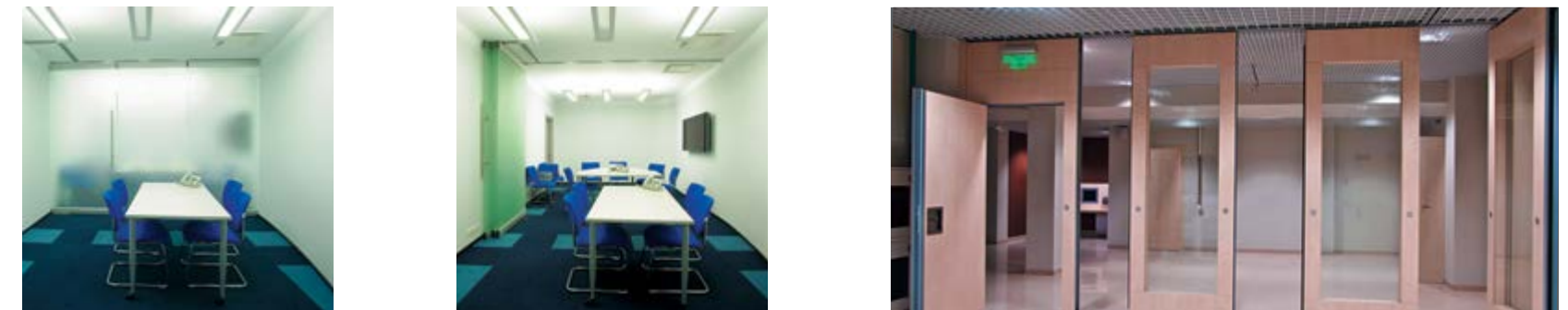
NAYADA-HUFCOR

1. These systems allow for space management by uniting rooms or creating two or more independent rooms, if necessary.

2. There are various partition design options: solid, partially glazed, all-glass partitions and partitions with built-in doors.

3. Partition thickness of 110 mm, height of up to 17 m, and sound insulation of up to 54 dB.

4. A wide range of track system solutions, all using a ceiling hanger – no bottom guide track; the load transfer solutions are provided for the heaviest sections. Availability of manual and automatic section sealing options for sound insulation.



PANELS TYPES

1. lever closure panel
2. normal panel
3. corner panel
4. T-shaped panel
5. inset door panels
6. double inset pass door
7. pivot door
- 8, 9. window installed panels

PRODUCTS | DOORS



1 | CRYSTAL



2 | VITRAGE_II



3 | SLIM



4 | INTERO

THE COMPANY PRODUCES THE FOLLOWING TYPES OF DOORS:

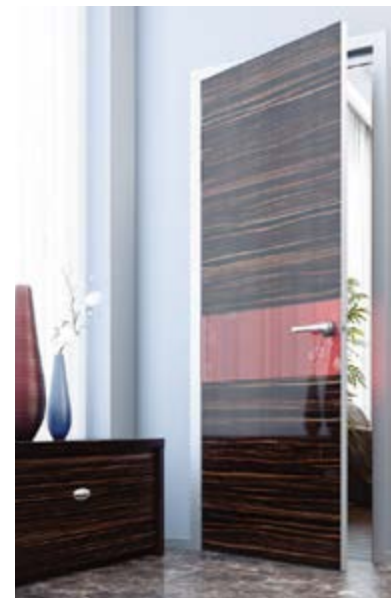
Crystal all-glass doors **1** / Aluminum frame stained glass doors **1, 2** / Slim **3** / Intero doors **4** with double glazing and hidden leaf frame **4**. / Solid doors with laminate **5** and veneer **13** finishing / Fireproof glazed doors **7** and solid doors **6**.



9 | KEYHOLE



10 | EL GAUCHO



11 | MIX

PRODUCTS | DOORS



5 | LAMINARE



6 | FIREPROOF



7 | FIREPROOF



8 | MAGIC

THE COMPANY PRODUCES THE FOLLOWING TYPES OF DOORS:

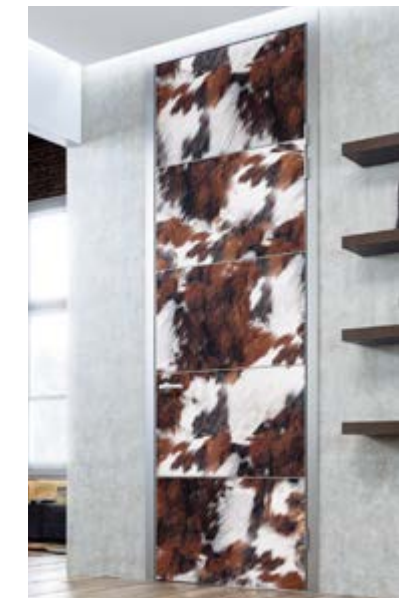
Crystal all-glass doors **1** / Aluminum frame stained glass doors **1, 2** / Slim **3**, / Intero doors **4** with double glazing and hidden leaf frame **4**. Solid doors with laminate **5** and veneer **13** finishing / Fireproof glazed doors **7** and solid doors **6**.



12 | BLUESTONE



13 | VENEER



14 | SAVANNA

PRODUCTS | FIRE RESISTANT PARTITIONS



NAYADA-FIREPROOF

NAYADA-Fireproof partitions provide a high degree of fire protection and may be installed in different areas such as educational institutions, trading halls, business centers, offices, banks as well as manufacturing plants and warehouses.

NAYADA Company offers fire resistant partition systems of EIW15, EIW30, EIW45, EIW60 and EIW90 refractoriness levels, and fireproof doors of EIW15, EIW30 and EIW60 refractoriness levels.

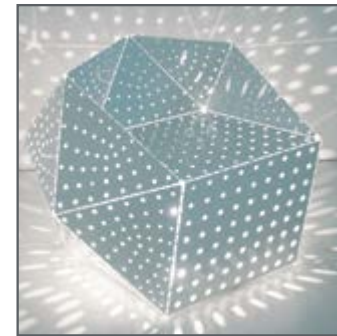
Various solutions for profile finishing and glass allow satisfying the widest range of demands of clients. One of the unique offers is fireproof doors of up to 3 meters high, which help to more use of the transparent space. Translucent all-glass partitions ensure invisible fire resistance; thus they may be easily and harmoniously fitted into retail and office center interiors. All the products are certified in Russian test centers.



RECEPTION

Custom designed NAYADA reception units allow for implementing creative concepts of designers and meet the requirements of the most demanding clients. The individual approach guarantees that each product perfectly fits the other interior pieces. The conformity to the already developed design of the room, the selection of the required color gamma, optimum size and functional properties, range of finishing materials including plastic of various textures and colors, natural fine and exotic wood veneer, glass and stone.

PRODUCTS | FURNITURE



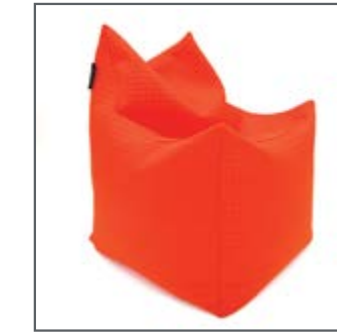
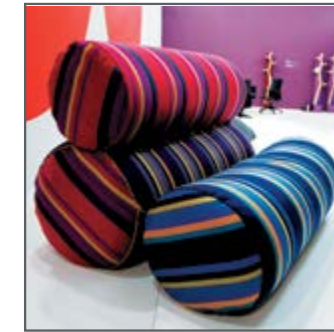
LEPOTA FURNITURE FACTORY

LEPOTA is harmony of image, spirit of creation, charm of individuality. LEPOTA accentuates the space. An office suite is the center around which the space is arranged, shelves add zest to the space. LEPOTA is exceptional quality and freedom in forms.

www.lepota-rus.com

LEPOTA

furniture factory



SOFAS AND FOOTSTOOLS SMART

Smart Balls is a design brand specializing in frameless furniture — bean bags and sofas. Its approach is to leave the old stereotypes behind: they have rethought the familiar and now classic Sacco shape, and turned the ordinary bean bag for the undemanding consumers, into a true art object. The company works with some of the best Russian designers and artists, developing a large collection of chairs and sofas, and creating its own collection of fabrics. Moreover, Smart Balls is working with textiles by brands such as Kvadrat, Maharam, Gaston y Daniela, Malabar, Etro, Kenzo and many others. The company offers its clients one-off, original ideas.

www.smartballs.ru
+7 (495) 649 6046

smartballs

PRODUCTS | FURNITURE

PROJECT ABD'VISE | BORIS LEVYANT
IRINA PRISEDSKAYA



PROJECT PROFILE | VLADIMIR KUZ'MIN



TWELVE ARCHITECTS
CREATE FURNITURE



PROJECT VICTORIA | TOTAN KUZEMBAEV
DMITRY PISMANIK



PRODUCTS | FURNITURE

PROJECT SPEECH | SERGEY TCHOBAN
SERGEY KUZNETSOV



PIGRECO | LUCA SCACCHETTI



PROJECT O-24 | YEVGENY POLYANTSEV



ADDRESSES

RUSSIA

NAYADA-MOSCOW

121059, Moscow, Berezhkovskaya 16a
Tel. / Fax: (495) 933 10 55, 258 75 46
office@nayada.ru, www.nayada.ru

NAYADA-EKATERINBURG

620014, Ekaterinburg, Radishcheva street, 6a, of. 2902
Tel. / Fax: +7 (343) 287 01 00
ekaterinburg@nayada.ru
www.nayada-ekaterinburg.ru

NAYADA-KAZAN

420097, Kazan, Dostoyevsky street, 66
Tel.: +743 (524) 80 48, +743 (524) 81 48
kazan@nayada.ru, www.nayada-kazan.ru

NAYADA-KRASNODAR

350000, Krasnodar, Karasunskaja str., 60
(business centre «Karasunskij»), of. 37
Tel.: +7 (861) 200 69 44, +7 (861) 200 69 50,
+7 (861) 210 27 02
krasnodar@nayada.ru, www.nayada-krasnodar.ru

NAYADA-KRASNOYARSK

660077, Krasnoyarsk, Aviators street, 23 «a»
Tel.: +7 (391) 277 10 63, +7 (391) 277 10 73
krasnoyarsk@nayada.ru, www.nayada-krasnoyarsk.ru

NAYADA-NIZHNY NOVGOROD

603057, Nizhny Novgorod, Nartova street, 6, of. 605
Tel./ Fax: +7 (8312) 78 66 84, +7 (8312) 78 66 85,
+7 (8312) 78 66 86
nnovgorod@nayada.ru

NAYADA-NOVOSIBIRSK

630091, Novosibirsk, Sovetskaya street, 64, of. 603
Tel.: +7 (383) 236 20 67
novosibirsk@nayada.ru, www.nayada-nsk.ru

NAYADA-PERM

614000, Perm, Monastyrskaya street, 95, «G»
Tel.: +7 (342) 206 70 80, +7 (342) 206 39 20,
+7 (342) 215 57 86
Info@nayada.perm.ru, www.nayada-perm.ru

NAYADA-ROSTOV-ON-DON

344130, Rostov-na-Donu, Dovatora str.,197, of. 205 A
+7 (863) 237 23 15, +7 (863) 237 23 13
rostov-na-donu@nayada.ru, www.nayada-rostov.ru

NAYADA-SAMARA

443086, Samara, Eroshevskogo, 3, building 1, office. 310
Tel.: +7 (846) 279 08 90
Fax: (846) 334 44 42
info@nayada-samara.ru, www.nayada-samara.ru

NAYADA-ST. PETERSBURG

191119, St. Petersburg, Marata street 69/71, building b,
«Rainassance Plaza», office 203 A
Tel. /Fax: +7 (812) 449 10 90
Info@nayadaneva.ru, www.nayada-neva.ru

NAYADA-SURGUT

628415, Surgut, 51/1 Profsoyuzov Str., 2nd floor, ste. 2
Fax: +7 (3462) 22 36 22
surgut@nayada.ru, www.nayada-surgut.ru

NAYADA-TYUMEN

625048, Tyumen, Kharkiv street, 27
Tel. /Fax: +7 (3452) 59 31 49, +7 (3452) 59 31 59
tumen@nayada.ru, www.nayada-tumen.ru

NAYADA-CHELYABINSK

454080, Chelyabinsk, Engels street, 44 d, office. 901
Tel.: +7 (351) 216 02 22
chelyabinsk@nayada.ru, www.nayada-chelyabinsk.ru

NAYADA-OMSK

644043, Omsk, Frunze str., 40 ofis 404 – 6
Tel./Fax: +7 (3812) 90 24 42
Tel.: +7 (951) 414 05 01, +7 (962) 048 98 85
www.nayada-omsk.ru, rugerasimov@nayada.ru

KAZAKHSTAN

NAYADA-ALMATY

050008, Kazakhstan, Almaty, Tole bi street,
house 187, 2 fl.
Tel. /Fax: +710 7(727) 395 46 09,
+710 7(727) 395 46 10, +710 7(727) 395 46 11
info@nayada.kz, www.nayada.kz

NAYADA-ASTANA

010000, Astana city, Barayev street, 16, block b,
3rd floor, of. 304
Tel. / Fax:+7 (7172) 59 26 86, +7 (7172) 59 26 70
info@nayada-astana.kz, www.nayada-astana.kz

ITALY

VERONA

Nayada International S.r.l.
Via Crivellin, n° 9/K
37010 AFFI – VERONA ITALY
Tel. / Fax: +39 045 62 61 302
+39 045 72 38 520
info@nayada.it, www.nayada.com

BELARUS

NAYADA-MINSK

220035, Belarus, Minsk,
Timiryazeva street 65a, of. 530
Tel.: (10 37517) 250 60 24, (10 37517) 205 89 53
minsk@nayada.ru, www.nayada.by

MOLDOVA

NAYADA-KISHINEV

«NAYADA-SE» SRL
off. 204, bloc 2/4, Studentilor str-la, MD-2020, mun.
Chisinau, R. Moldova
Tel.: 8 58 373 (22) 240 307, 8 58 373 (22) 240 308
office@nayada.md; www.nayada.md

UKRAINE

NAYADA-KIEV

04050, Ukraine, Kiev, Pimonenko street 13, business
center «Forum», of. 5A/14
Tel.: +8 (10 380 44) 247 69 55 , +8 (10 380 44) 247 69 57
kiev@nayada.ru, www.nayada.ua

